

NOTES

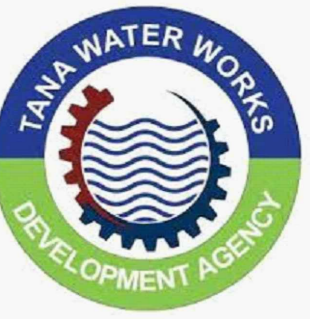
1. ALL LEVELS ARE IN METERS ABOVE SE/ LEVEL.
2. COORDINATES ARE BASED ON UTM.
3. LOCATION OF AIR VALVES, WASHOUTS, BENDS AND OTHER FITTINGS AS SHOWN UNLESS OTHERWISE DIRECTED BY THE ENGINEER ON SITE.
4. GROUND AND INVERT LEVEL SHOWN ARE AS SHOWN ON DRAWING UNLESS OTHERWISE INDICATED ON SITE BY THE ENGINEER.
5. PIPES ARE TO BE LAID TO EVEN GRADIENTS WITH A MINIMUM COVER OF 1.0M. WHERE COVER IS LESS THAN THIS PIPE TO BE SURROUNDED WITH CONCRETE
6. ALL BENDS ARE HORIZONTAL UNLESS OTHERWISE STATED.
7. IN WATER LOGGED AREAS, PIPES TO BE BEDDED WITH SINGLE SIZED OR GRADED AGGREGATES AS PER CLAUSE 4.30.1 AND 216 OF TECHNICAL SPECIFICATIONS AND/OR ANCHOR BLOCKS AS MAY BE DIRECTED ON SITE BY THE ENGINEER.

LEGEND:

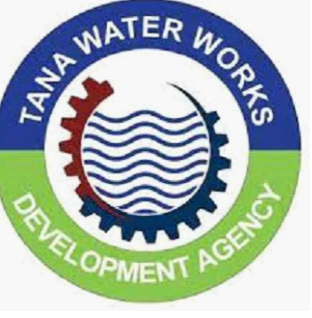
- PROPOSED PIPELINE
- EXISTING GROUND PROFILE
- PIPE INVERT PROFILE
- EXISTING ROAD
- AIR VALVE
- DOUBLE AIR VALVE
- WASHOUT
- WASHOUT TYPE 1
- WASHOUT TYPE 2
- NOMINAL DIAMETER
- NOMINAL PRESSURE
- VERTICAL BEND
- HORIZONTAL BEND
- EXISTING STRUCTURE
- EARTH ROAD
- GRAVEL ROAD
- CUT

FOR CONSTRUCTION

REV	REVISIONS	SIGN	DATE	APPROV
	BY			
	CHECKED			
	BY			
	CHECKED			
	BY			
	CHECKED			
CO	BY			
	CHECKED			

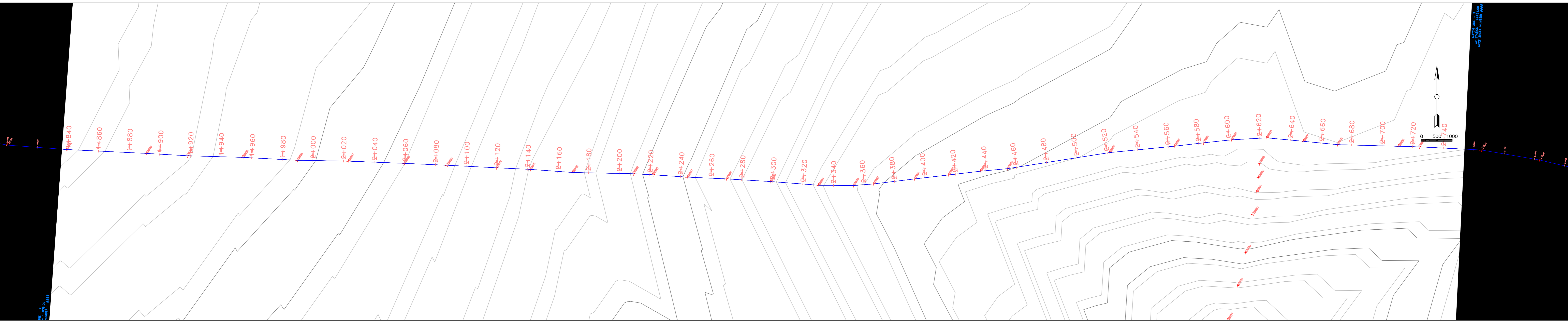
CLIENT
 TANA WATER WORKS DEVELOPMENT AGENCY
 P. O. BOX 1292-0100 NYERI

PROJECT
 NGARIAMA NJUKIINI WATER PROJECT

Civil/Structural Engineers
 TANA WATER WORKS DEVELOPMENT AGENCY
 P. O. BOX 1292-0100 NYERI

Drawing Title
 NGARIAMA NJUKIINI WATER PROJEC
 TEE OFF TO KIANGORO PIPELINE
 PLAN AND PROFILE (SHEET 3 OF 4)

Designed by DWN	Drawn by EWN
Checked by JMM	Approved by
Scale AS SHOWN (A1)	Date MAY, 2022
Job No. 1	ACAD File:
C STATUS	DRAWING No.TWWD/ANNWP/TK-003



KIANGORO LATERAL

