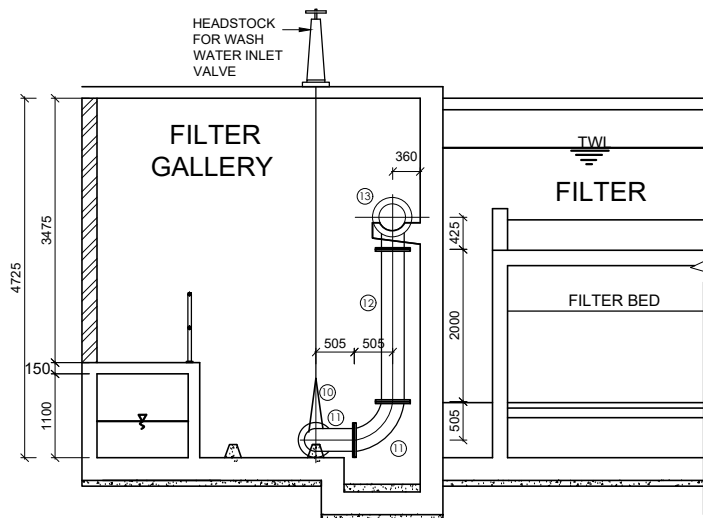


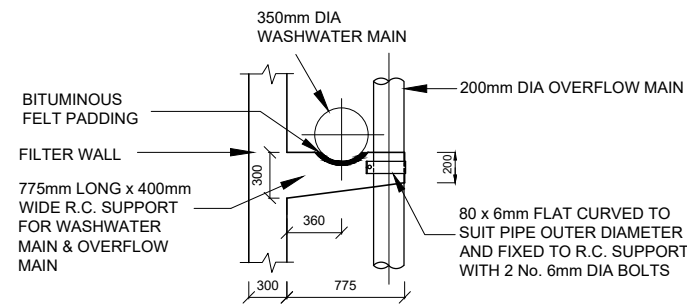
LAYOUT PLAN OF WASH WATER INLET PIPEWORK

SCALE 1:100



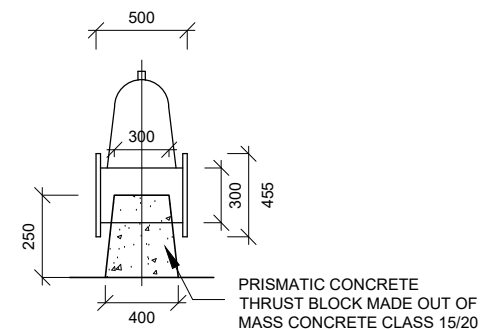
SECTION A-A

SCALE 1:100



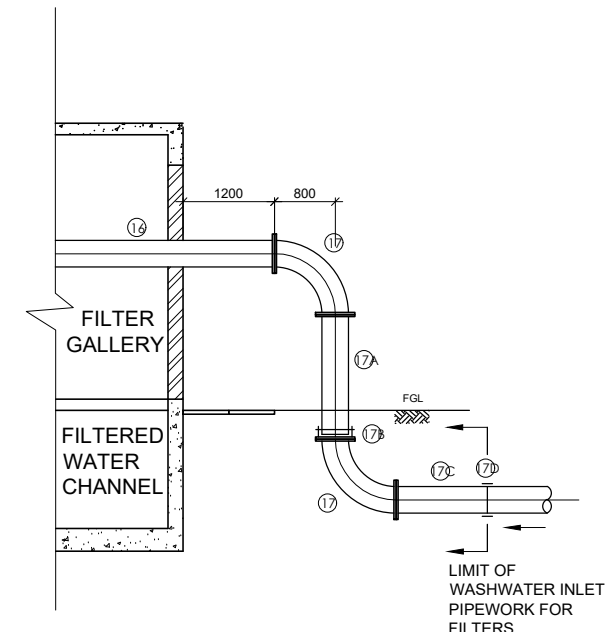
**DETAIL OF R.C. SUPPORT
FOR WASHWATER &
OVERFLOW MAINS (4 No.)**

SCALE 1:50



**SUPPORT FOR 300mm DIA.
GATE VALVE**

(NTS)



SECTION 1-1

SCALE 1:100

NOTES

- ALL PIPE, FITTINGS AND VALVE DIAMETERS ARE NOMINAL DIAMETERS
- ALL DIMENSIONS ARE IN MM UNLESS OTHERWISE STATED
- ONLY FIGURED DIMENSIONS TO BE TAKEN FROM THIS DRAWING
- PIPE AND FITTINGS DIMENSIONS MAY VARY FROM MANUFACTURER TO MANUFACTURER
- FOR PIPES & FITTING SCHEDULES, SEE DRG. No. TWWDA/KTW/FFG-10
- THIS DRAWING TO BE USED FOR PIPES AND FITTINGS DETAILS ONLY. FOR OTHER DETAILS OF THE FILTERS AND FILTER GALLERY, SEE DRGS. No. TWWDA/KTW/FFG-01 - 03 & 08

LEGEND

S & S - SOCKET & SPIGOT
P.C.C - PRECAST CONCRETE
W.W - WASH WATER
GL - GROUND LEVEL
FGL - FINISHED GROUND LEVEL
GMS - GALVANIZED MILD STEEL
TWL - TOP WATER LEVEL

FOR CONSTRUCTION

REV	REVISIONS	SIGN	DATE	APPROVED
	BY			
	CHECKED			
	BY			
	CHECKED			
	BY			
	CHECKED			
	BY			
	CHECKED			

CLIENT
TANA WATER WORKS
DEVELOPMENT AGENCY
P. O. BOX 1292-10100
NYERI

PROJECT
DESIGN FOR KAHARO WATER
TREATMENT WORKS - OTHAYA

Civil/Structural Engineers
TANA WATER WORKS
DEVELOPMENT AGENCY
P. O. BOX 1292-10100
NYERI

Drawing Title
KAHARO WATER TREATMENT WORKS
DETAILS OF WASH WATER
INLET PIPEWORK

Designed by	DWN	Drawn by	EWN
Checked by	JMM	Approved by	
Scale	AS SHOWN (A1)	Date	SEP 2022
Job No.	1	ACAD File:	
PD STATUS	DRAWING No. TWWDA/KTW/FFG-05	C0 REV	