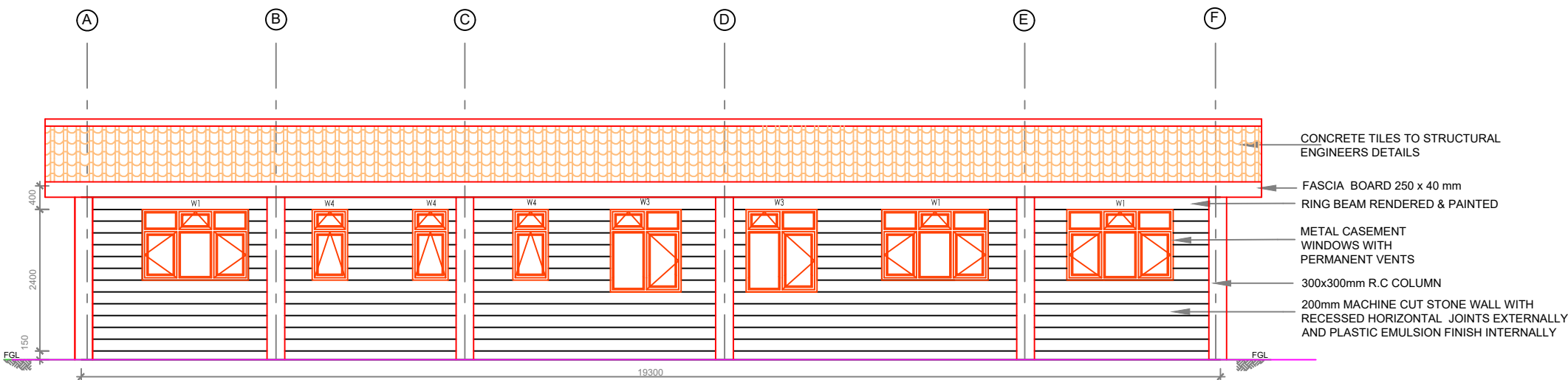


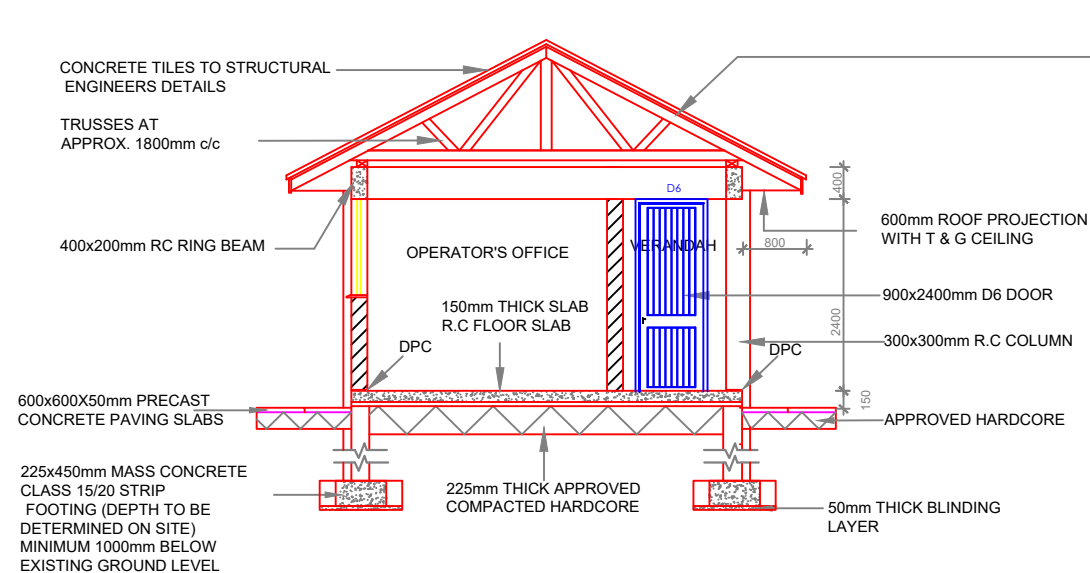
**ADMINISTRATION BLOCK  
FRONT ELEVATION 01**

**ADMINISTRATION BLOCK  
SIDE ELEVATION 02**



**ADMINISTRATION BLOCK  
REAR ELEVATION 03**

- CONCRETE TILES TO STRUCTURAL ENGINEERS DETAILS
- FASCIA BOARD 250 x 40 mm
- RING BEAM RENDERED & PAINTED
- METAL CASEMENT WINDOWS WITH PERMANENT VENTS
- 300x300mm R.C COLUMN
- 200mm MACHINE CUT STONE WALL WITH RECESSED HORIZONTAL JOINTS EXTERNALLY AND PLASTIC EMULSION FINISH INTERNALLY



**SECTION A-A**

- ROOF SPECIFICATION**  
COLOURED CONCRETE TILES LAID AT A 22.5 DEG ON GAUGE 28 G.C.I. SHEETS ON:
1. TIMBER TRUSSES (150x50mm RAFTERS AND TIES 100x50mm STRUTS) AT 1800mm C/C (NO TRUSSES ALONG END WALLS) END WALLS LOAD BEARING
  2. 150x50mm RAFTERS BETWEEN TRUSSES AT 600mm C/C
  3. 100x50mm PURLINS AT TRUSS NODES
  4. 100x50mm WALL PLATE
  5. 200x50mm RIDGE BOARD
  6. 250x40mm FASCIA BOARD
  7. 40x40mm TIMBER BATTENS AT 300mm C/C
  8. 12mm CHIP BOARD CEILING
  9. EX 75x25mm CORNICE

**NOTES:**

1. DIMENSIONS IN mm UNLESS OTHERWISE SPECIFIED
2. SETTING OUT AND FOUNDATION MUST BE APPROVED BY ENGINEER PRIOR TO COMMENCEMENT OF CONSTRUCTION
3. ALL WINDOW CILLS TO HAVE 25mm x 25mm DRIPS
5. ALL REINFORCED CONCRETE TO BE CLASS 25/20
6. 200 LITRES WATER STORAGE TANK TO BE PROVIDED IN ROOF SPACE
8. **ABBREVIATIONS**  
DPC - DAMP PROOF COURSE  
RC - REINFORCED CONCRETE  
FGL - FINAL GROUND LEVEL

CLIENT: **THE CHIEF EXECUTIVE OFFICER  
TANA WATER WORKS  
DEVELOPMENT AGENCY**  
P.O BOX 1292 - 10100,  
NYERI, KENYA

ENGINEERS: **CHIEF MANAGER TECHNICAL  
SERVICES  
TANA WATER WORKS  
DEVELOPMENT AGENCY**  
P.O BOX 1292 - 10100,  
NYERI, KENYA

PROJECT TITLE:  
**TETU - AGUTHI WATER SUPPLY**

DRAWING TITLE:  
**TETU WATER TREATMENT  
WORKS  
ADMINISTRATION BLOCK  
ELEVATIONS AND SECTION A-A**

Designed by: R.M.N.	Drawn by: R.M.N.
Checked by: J.M.M	Approved by: D.N.M
Scale: 1:75	Date: JAN 2024

DRG No. **TAWP/ADM/02**