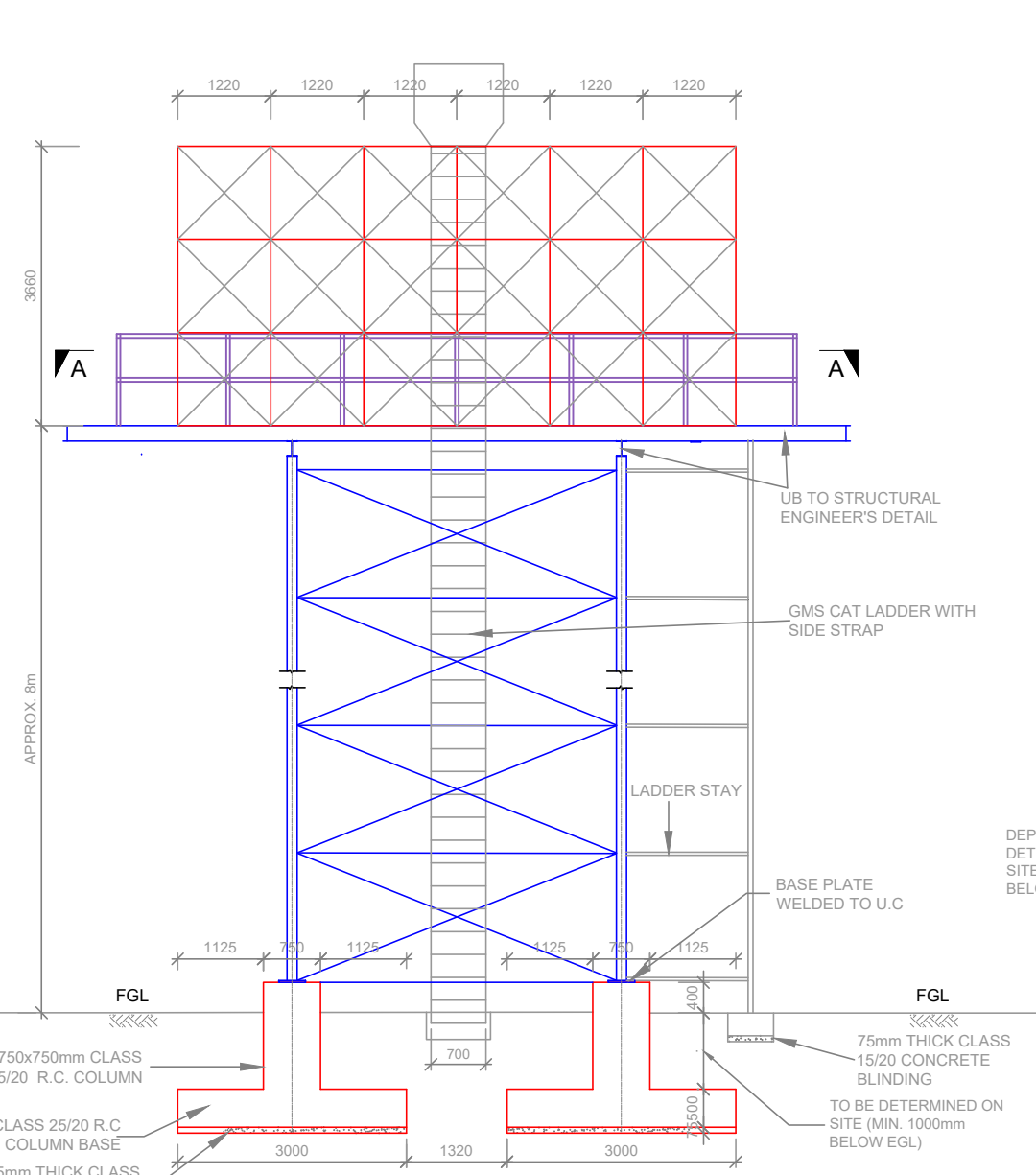
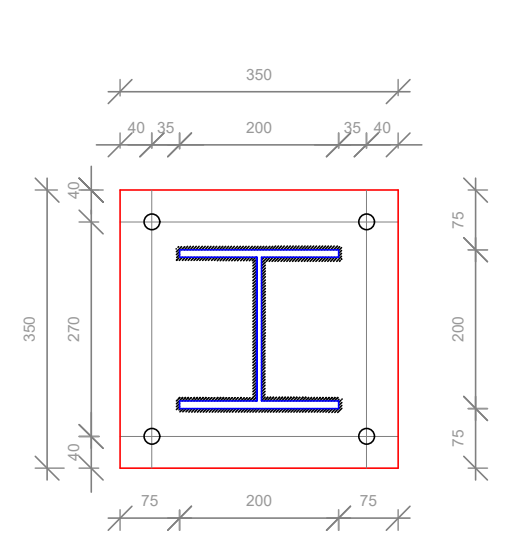


NOTES:

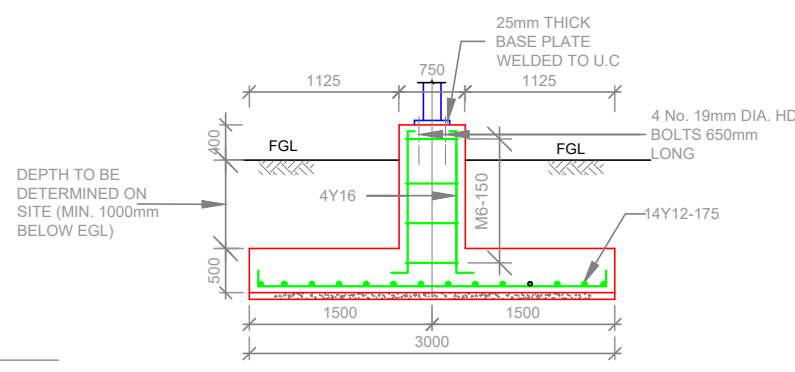
1. ALL PIPE DIAMETERS AND VALVE DIAMETERS ARE NOMINAL DIAMETERS
2. ALL DIMENSIONS ARE IN MM UNLESS OTHERWISE STATED
3. ONLY FIGURED DIMENSIONS TO BE TAKEN FROM THIS DRAWING
4. PIPE AND FITTINGS ARE BASED ON STEEL PIPES AND FITTINGS MADE BY ASP (K) LTD
5. GATE VALVES TO EURO 20 SERIES, TYPE 23 (SHORT FACE TO FACE TYPE VALVES) AS MADE BY POINT-A-MOUSSON (SAINT GOBAIN PAM) OR APPROVED EQUIVALENT
6. BALL FLOAT VALVES TO SERIES 1048, BIWATER OR APPROVED EQUIVALENT
7. THIS DRAWING TO BE USED FOR PIPEWORK DETAILS ONLY
8. CONTRACTOR TO PROVIDE SHOP DRAWING OF TANK AND TOWER DETAILS FROM AN APPROVED STEEL FABRICATOR FOR APPROVAL PRIOR TO FABRICATION AND DELIVERY



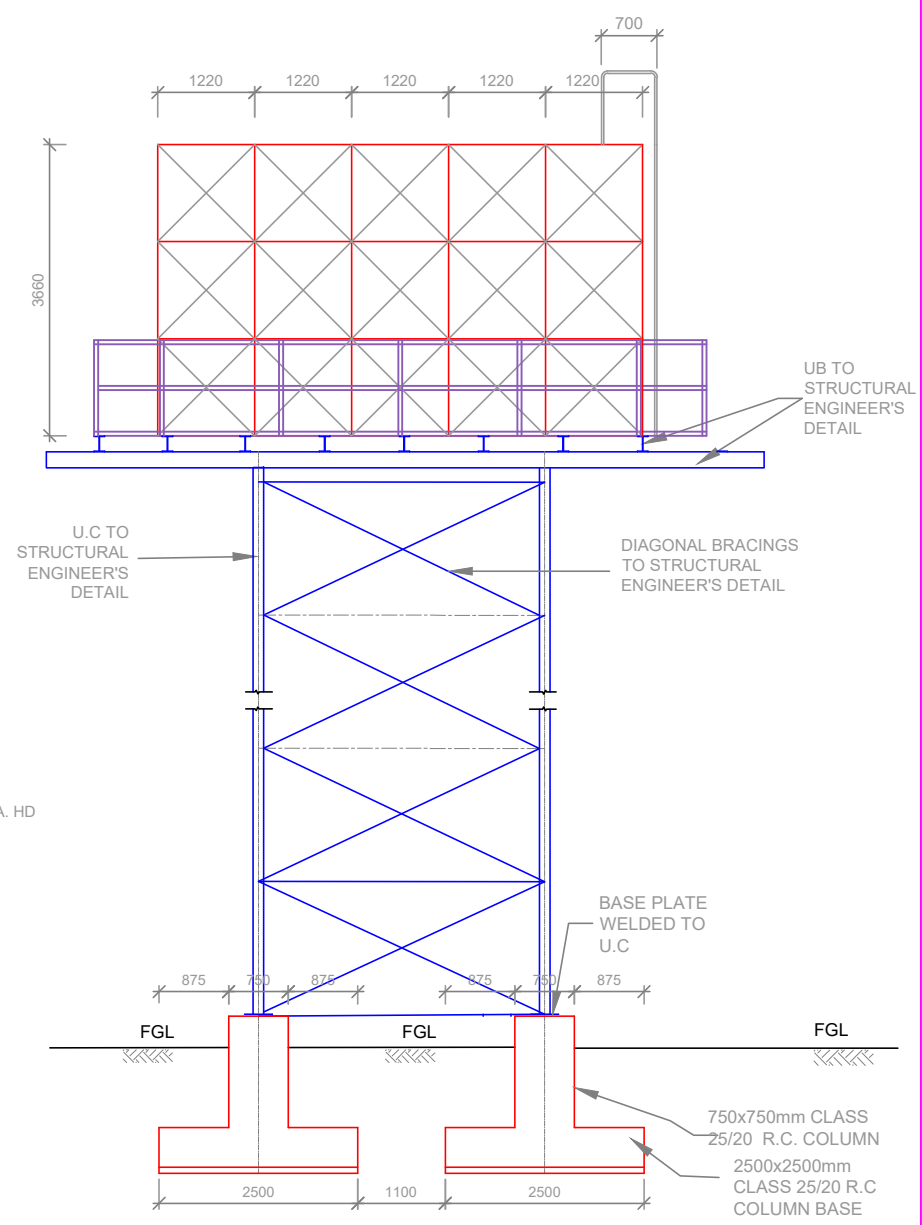
FRONT ELEVATION
1:100



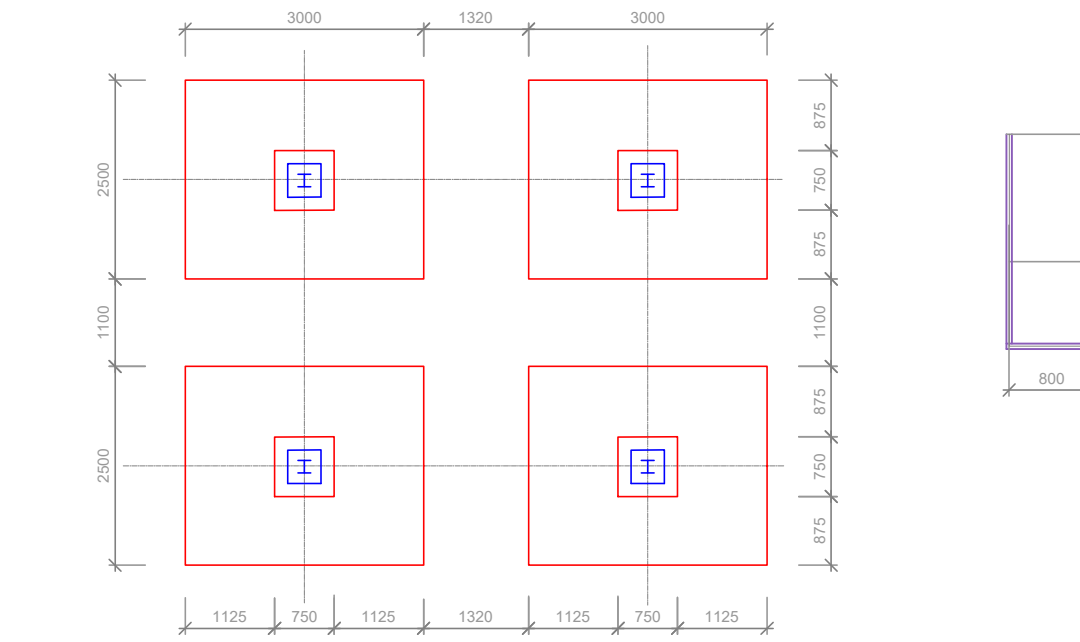
BASE PLATE
NTS



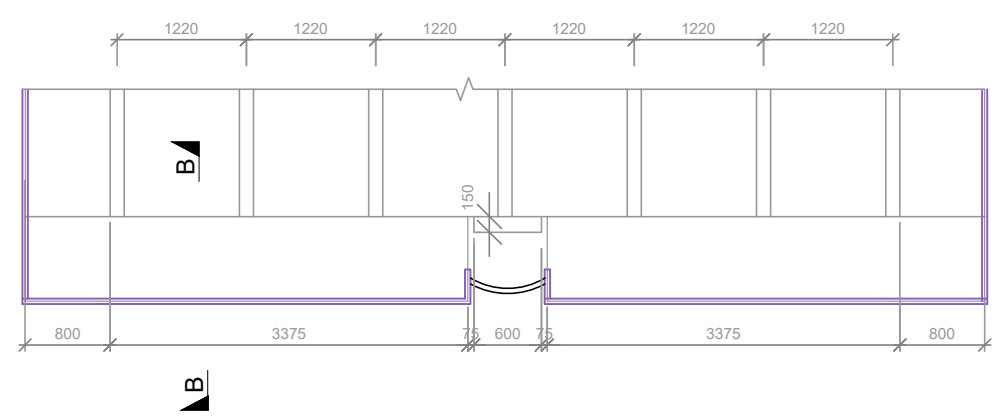
COLUMN BASE DETAILS
NTS



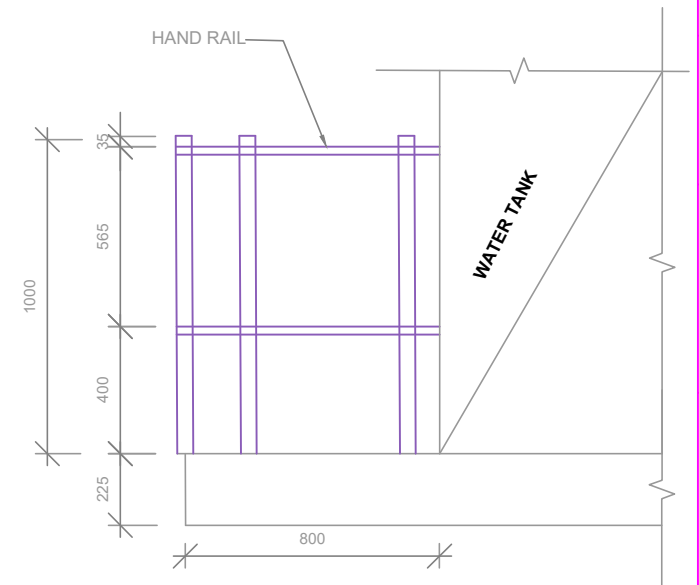
SIDE ELEVATION
1:100



FOUNDATION PLAN
SCALE 1:100



SECTION A - A
SCALE 1:75



SECTION B - B
1:25

CLIENT: **THE CHIEF EXECUTIVE OFFICER TANA WATER WORKS DEVELOPMENT AGENCY**
P.O BOX 1292 - 10100, NYERI, KENYA

ENGINEERS: **THE CHIEF EXECUTIVE OFFICER TANA WATER WORKS DEVELOPMENT AGENCY**
P.O BOX 1292 - 10100, NYERI, KENYA

PROJECT TITLE: **TETU WATER SUPPLY PROJECT**

DRAWING TITLE: **TETU AGUTHI WATER TREATMENT WORKS ELEVATED BACKWASH WATER TANK (150m³) TANK DETAILS**

Designed by: K.N.G.	Drawn by: R.M.N.
Checked by: J.M.M	Approved by: D.N.M
Scale: 1:100, 1:75 & 1:25	Date: NOV 2023
DRG No. TAWP/BWT/01	