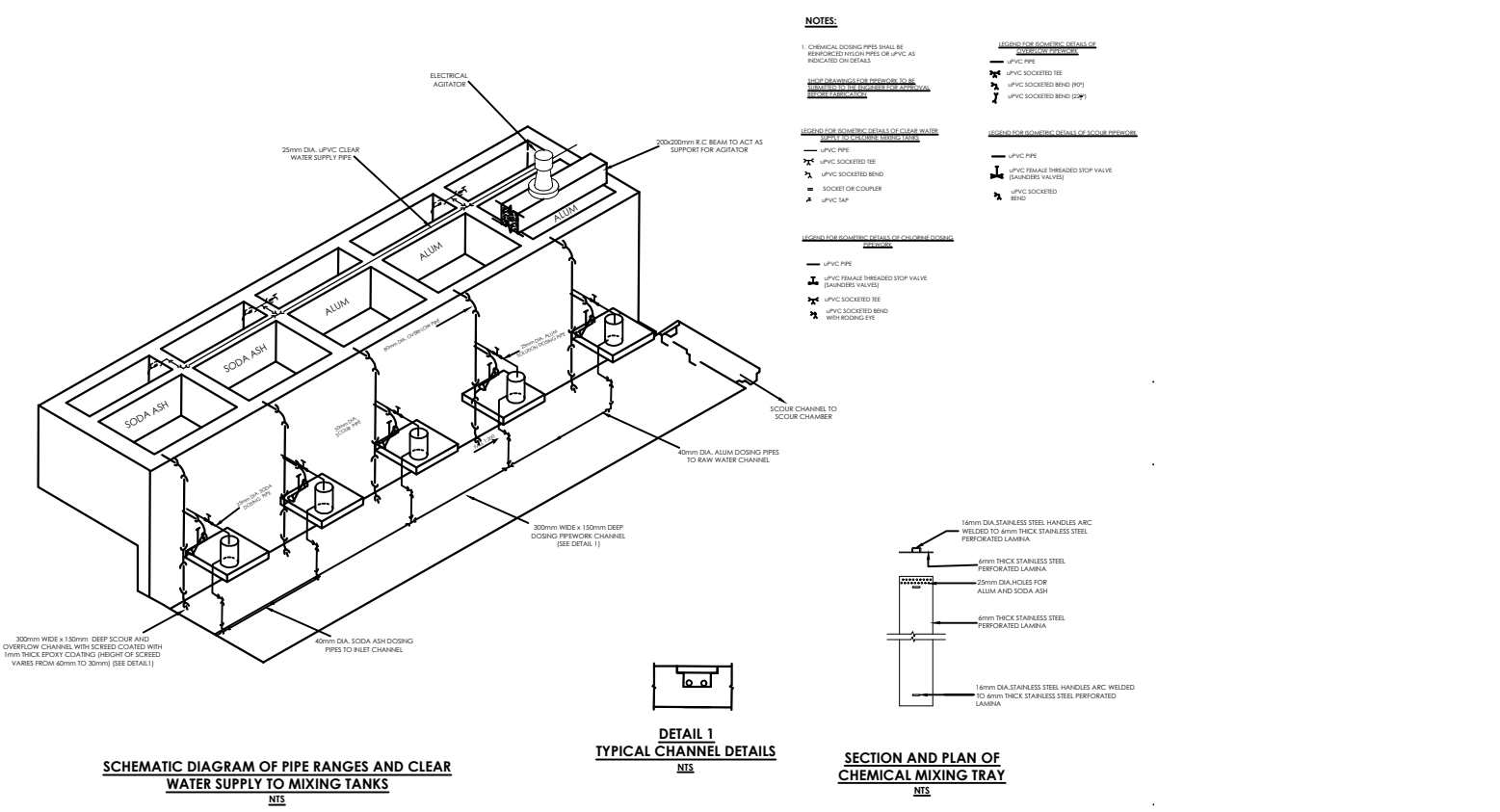
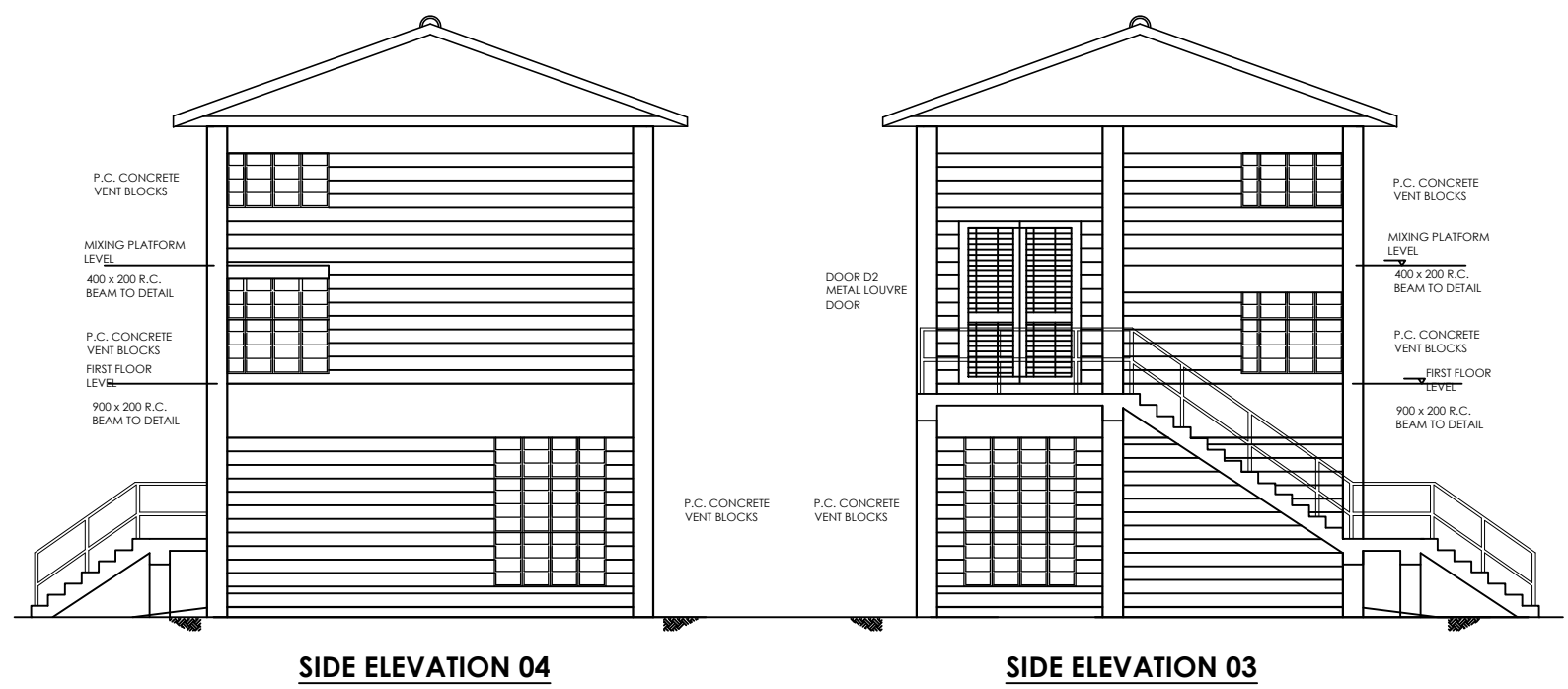



NOTES




- NOTES:**
- CHEMICAL DOSING PIPES SHALL BE REINFORCED WITH PIPES OR UPVC AS INDICATED ON DETAILS
- LEGEND FOR SCHEMATIC DETAILS OF CLEAR WATER SUPPLY:**
- UPVC PIPE
 - UPVC SOCKETED BEND
 - UPVC SOCKETED BEND (90°)
 - UPVC SOCKETED BEND (45°)
- LEGEND FOR SCHEMATIC DETAILS OF SCOUR CHAMBER:**
- UPVC PIPE
 - UPVC SOCKETED BEND
 - UPVC FEMALE THREADED STOP VALVE (STANDARD VALVE)
 - UPVC SOCKETED BEND
 - UPVC TAP
- LEGEND FOR SCHEMATIC DETAILS OF CHEMICAL DOSING:**
- UPVC PIPE
 - UPVC FEMALE THREADED STOP VALVE (STANDARD VALVE)
 - UPVC SOCKETED BEND
 - UPVC SOCKETED BEND WITH HOODING EYE

REV	REVISIONS	SIGN	DATE	APPROVED
	BY			
	CHECKED			
	BY			
	CHECKED			
	BY			
	CHECKED			
CD	BY			
	CHECKED			

CLIENT

TANA WATER WORKS DEVELOPMENT AGENCY
 P. O. BOX 1292-10100
 NYERI

PROJECT
 NGARIAMA NJUKIINI WATER PROJECT

Civil/Structural Engineers

TANA WATER WORKS DEVELOPMENT AGENCY
 P. O. BOX 1292-10100
 NYERI

Drawing Title
NGARIAMA NJUKIINI WATER PROJECT
CHEMICAL BLDG
ELEVATIONS&SCHEMATIC DRWG (SHEET 2 OF 2)

Designed by DWN	Drawn by EWN
Checked by JMM	Approved by
Scale AS SHOWN (A1)	Date AUG, 2022
Job No. 1	ACAD File: