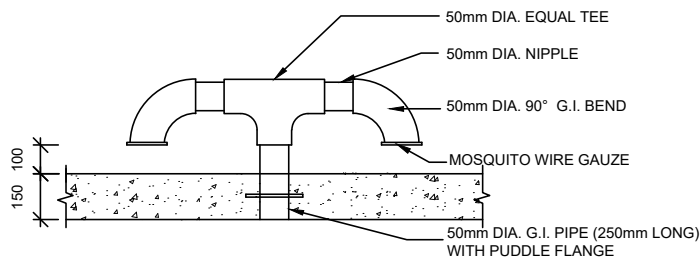
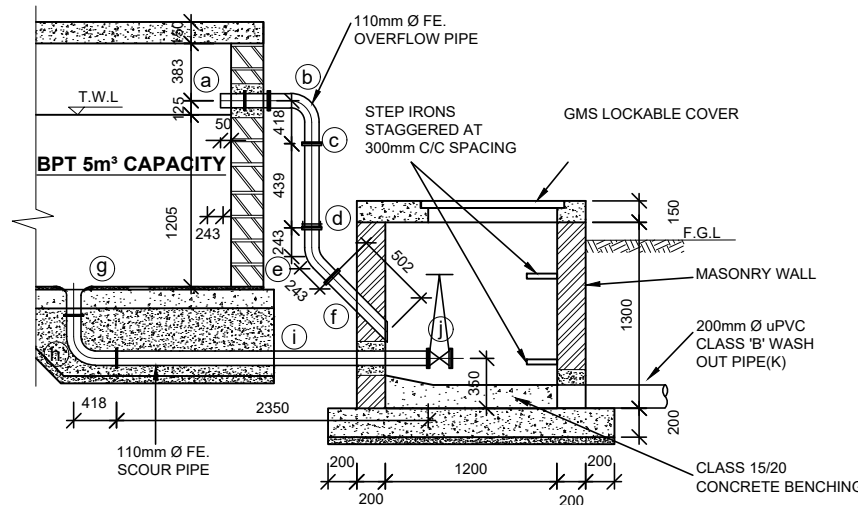


**SECTION A-A**  
**INLET & OUTLET PIPEWORK DETAILS**  
 SCALE 1 : 50



**VENT PIPE DETAIL**  
 N.T.S.



**SECTION B-B**  
**OVERFLOW & WASHOUT PIPEWORK DETAILS**  
 SCALE 1 : 50

- OVERFLOW AND SCOUR PIPEWORK DETAILS**  
**APPROVED LINED FERROUS PIPES AND FITTINGS**
- OVERFLOW PIPE WORK**
- Ⓐ 110mm DIA. FLANGED SPIGOT PIPE 425mm LONG WITH A PUDDLE FLANGE AT 162.5mm FROM THE SPIGOT END.....1 Nr.
  - Ⓑ 110mm DIA. ALL FLANGED 90° BEND .....1 Nr.
  - Ⓒ 110mm DIA. FLANGED SPIGOT PIPE (CUT TO SUIT ON SITE).....1 Nr.
  - Ⓓ 110mm DIA. FLANGE ADAPTOR .....1 Nr.
  - Ⓔ 110mm DIA. ALL FLANGED 45° BEND .....1 Nr.
  - Ⓕ 110mm DIA. FLANGED SPIGOT PIPE WITH A SPIGOT END BEVELLED (CUT TO SUIT ON SITE).....1 Nr.
- WASHOUT/SCOUR PIPE WORK**
- Ⓖ 110mm DIA. FLANGED BELLMOUTH .....1 Nr.
  - Ⓗ 110mm DIA. ALL FLANGED 90° BEND .....1 Nr.
  - Ⓘ 110mm DIA. DOUBLE FLANGED PIPE 2350mm LONG .....1 Nr.
  - Ⓛ 110mm DIA. ALL FLANGED GATE VALVE TO EURO 20 SERIES,TYPE 23 OR APPROVED EQUIVALENT.....1 Nr.
  - Ⓚ 200mm DIA. uPVC CLASS 'B' PIPE 10000mm LONG. ....1 Nr.

- INLET PIPEWORK DETAILS**  
**APPROVED LINED FERROUS PIPES AND FITTINGS**
- ① 110mm DIA. COUPLING .....1 Nr.
  - ② 110mm DIA. FLANGED SPIGOT PIPE 1200mm LONG .....1 Nr.
  - ③ 110 x 110mm DIA. ALL FLANGED RADIAL TEE .....1 Nr.
  - ④ 110mm DIA. BLANK FLANGE .....1 Nr.
  - ⑤ 110mm DIA. FLANGED SPIGOT PIPE 1200mm LONG .....4 Nr.
  - ⑥ 110mm DIA. COUPLING .....2 Nr.
  - ⑦ 110mm DIA. PLAIN ENDED PIPE 8m LONG(CUT TO SUIT ON SITE)...1 Nr.
  - ⑧ 110mm DIA. ALL FLANGED 90° BEND .....3 Nr.
  - ⑨ 110mm DIA. FLANGE ADAPTOR .....3 Nr.
  - ⑩ 110mm DIA. ALL FLANGED GATE VALVE .....1 Nr.
  - ⑪ 110mm DIA. FLANGED SPIGOT PIPE (CUT TO SUIT ON SITE).....1 Nr.
  - ⑫ 150mm DIA. DOUBLE FLANGED PIPE 575mm LONG WITH A PUDDLE FLANGE.....1 Nr.
  - ⑬ 110mm DIA. ALL FLANGED FLOAT VALVE TO SERIES 1042 BIWATER CATALOGUE OR APPROVED EQUIVALENT.....1 Nr.
  - ⑭ 110mm DIA. FLANGED SPIGOT FERROUS PIPE (CUT TO SUIT ON SITE).....1 Nr.

- OUTLET PIPEWORK DETAILS**  
**APPROVED LINED FERROUS PIPES AND FITTINGS**
- Ⓐ 110mm DIA. FLANGED BELLMOUTH .....1 Nr.
  - Ⓑ 110mm DIA. ALL FLANGED 90° BEND .....2 Nr.
  - Ⓒ 110mm DIA. FLANGED SPIGOT PIPE 1950mm LONG (CUT TO SUIT ON SITE).....1 Nr.
  - Ⓓ 110mm DIA. FLANGE ADAPTOR .....2 Nr.
  - Ⓔ 110mm DIA. ALL FLANGED GATE VALVE .....1 Nr.
  - Ⓕ 110mm DIA. FLANGED SPIGOT PIPE 1200mm LONG .....3 Nr.
  - Ⓖ 110mm DIA. COUPLING .....2 Nr.
  - Ⓗ 110mm DIA. PLAIN ENDED PIPE 8m LONG(CUT TO SUIT ON SITE)...1 Nr.
  - Ⓘ 110mm DIA. BLANK FLANGE .....1 Nr.
  - Ⓛ 110 x 110mm DIA. ALL FLANGED RADIAL TEE .....1 Nr.
  - Ⓚ 110mm DIA. FLANGED SPIGOT PIPE 1200mm LONG .....1 Nr.
  - Ⓛ 110mm DIA. COUPLING .....1 Nr.

- NOTES**
1. ALL PIPE, FITTINGS AND VALVE DIAMETER ARE NOMINAL DIAMETERS & OF CLASS NP 16
  2. OTHER PIPES AND FITTINGS ARE SHOWN ON THE SITE LAYOUT PLANS ON DRG. NO. TWWDA/ENDA/BPT-03
  3. ALL DIMENSIONS ARE IN MM UNLESS OTHERWISE STATED
  4. ONLY FIGURED DIMENSIONS TO BE TAKEN FROM THIS DRAWING
  5. PIPE AND FITTINGS DIMENSIONS ARE BASED ON STEEL PIPES AND FITTINGS AS MADE BY ASP (K) LTD.
  6. VALVES DIMENSIONS ARE BASED ON EURO 20 SERIES, TYPE 23 (SHORT FACE TO FACE TYPE VALVES) AS MADE BY PONT-A-MOUSSON (SAINT GOBAIN PAM).

- ABBREVIATIONS**
1. T.W.L - TOP WATER LEVEL
  2. F.G.L - FINISHED GROUND LEVEL
  3. G.I - GALVANISED IRON
  4. R.C - REINFORCED CONCRETE
  5. M.S - MILD STEEL
  6. BPT - BREAK PRESSURE TANK
  7. FE - FERROUS

REVISIONS		SIGN	DATE	APPROVED
	BY			
	CHECKED			
	BY			
	CHECKED			
	BY			
	CHECKED			

CLIENT: **THE CHIEF EXECUTIVE OFFICER**  
**TANA WATER WORKS**  
**DEVELOPMENT AGENCY**  
 P.O BOX 1292 - 10100,  
 NYERI, KENYA

ENGINEER: **CHIEF MANAGER TECHNICAL**  
**SERVICES**  
**TANA WATER WORKS**  
**DEVELOPMENT AGENCY**  
 P.O BOX 1292 - 10100,  
 NYERI, KENYA

PROJECT TITLE:  
**DESIGN FOR ENDARASHA WATER PROJECT**

DRAWING TITLE:  
**BREAK PRESSURE TANK ON KAMIANDA-ENDARASHA LINE (CAPACITY 5m³) PLAN, SECTION & R.C. DETAILS**

Designed by: D.N.W	Drawn by: A.M.M
Checked by: J.M.M	Approved by: D.N.M
Scale: 1:25	Date: OCT 2022

DRG No. **TWWDA/ENDA/BPT-01**