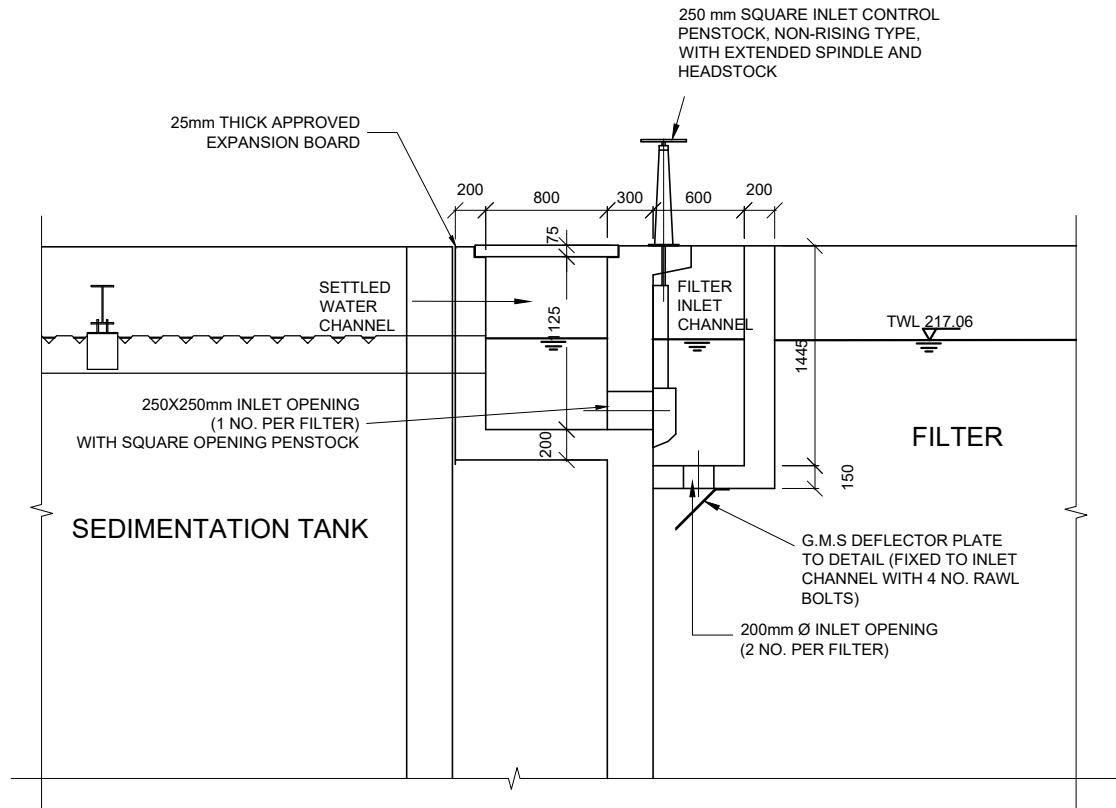
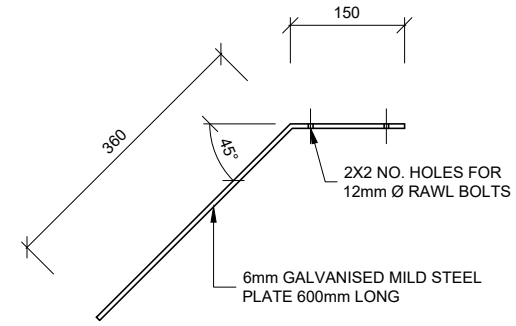


**FILTER INLET DETAILS
PLAN
SCALE 1:50**

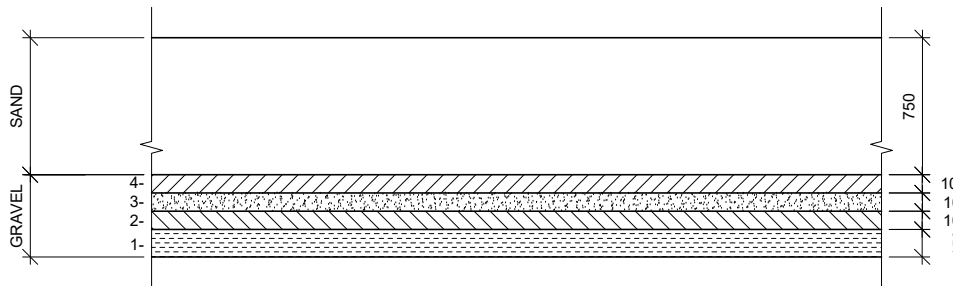


**FILTER INLET DETAILS
SECTION A-A
SCALE 1:50**



**DEFLECTOR PLATE
(2 NO. PER FILTER)
SCALE 1:10**

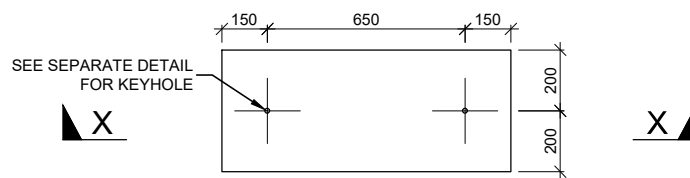
DETAILS OF P.C.C COVER SLABS OVER SETTLED WATER CHANNEL



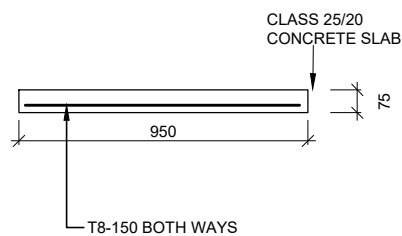
| LAYER | 1 | 2 | 3 | 4 |
|---------------------|---------------|-------------|-------------|-------------|
| DEPTH (mm) | 150 | 100 | 100 | 100 |
| PASSING SQUARE MESH | 38mm (1 1/2") | 20mm (3/4") | 12mm (1/2") | 5mm (3/16") |
| RETAINED | 20mm (3/4") | 12mm (1/2") | 5mm (3/16") | 2mm (3/32") |

TOP SAND LAYER 750mm EFFECTIVE SIZE 0.7mm
UNIFORMITY COEFFICIENT 1.5

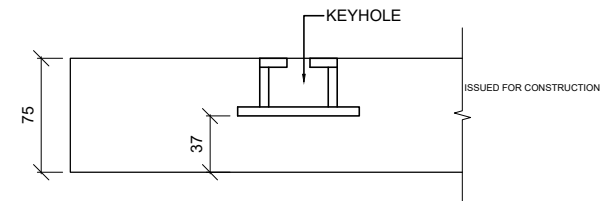
**DETAILS OF FILTER MEDIA
NTS**



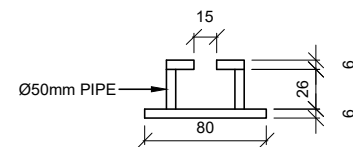
**P.C.C SLAB PLAN
SCALE 1:25**



**SECTION X-X
SCALE 1:25**



**KEYHOLE DETAIL A
SCALE 1:5**



**KEYHOLE DETAIL B
SCALE 1:5**

NOTES

- DIMENSIONS IN MM UNLESS OTHERWISE SPECIFIED
- ALL EXPOSED CONCRETE EDGES TO HAVE A 25mm X 25mm CHAMFER

LEGEND

S & S - SOCKET & SPIGOT
P.C.C - PRECAST CONCRETE
W.W - WASH WATER
GL - GROUND LEVEL
FGL - FINISHED GROUND LEVEL
GMS - GALVANIZED MILD STEEL
TWL - TOP WATER LEVEL

FOR CONSTRUCTION

| REV | REVISIONS | SIGN | DATE | APPROVED |
|-----|-----------|------|------|----------|
| | BY | | | |
| | CHECKED | | | |
| | BY | | | |
| | CHECKED | | | |
| | BY | | | |
| | CHECKED | | | |
| | BY | | | |
| | CHECKED | | | |

CLIENT

**TANA WATER WORKS
DEVELOPMENT AGENCY**
P. O. BOX 1292-10100
NYERI

PROJECT

DESIGN FOR KAHARO WATER
TREATMENT WORKS - OTHAYA

Civil/Structural Engineers

**TANA WATER WORKS
DEVELOPMENT AGENCY**
P. O. BOX 1292-10100
NYERI

Drawing Title

**KAHARO WATER TREATMENT WORKS
DETAILS OF INLET AND
FILTER MEDIA**

| | | | |
|-------------|------------------------------|-------------|----------|
| Designed by | DWN | Drawn by | EWN |
| Checked by | JMM | Approved by | |
| Scale | AS SHOWN (A1) | Date | SEP 2022 |
| Job No. | 1 | ACAD File: | |
| PD STATUS | DRAWING No. TWWDA/KTW/FFG-03 | C0 REV | |