

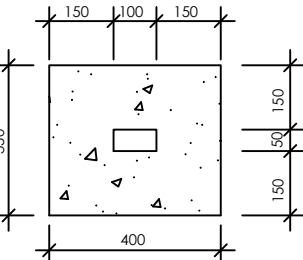
MINISTRY WATER SANITATION & IRRIGATION
& TWWDA LOG AS GUIDED BY PROJECT OFFICER

SADOLIN GLOSS
CALYPSO BLUE
20 E56
WITH WHITE LETTERING
(FONT SIZE = 50mm)

16mm GAUZE THICK PLAIN SHEET
WELDED ON 75x50x4mm RHS

75x50x4mmx10kg/m R.H. SECTION

400x350x600mm DEEP
CONCRETE CLASS 20/20
FOOTING



SECTION A - A

FRONT ELEVATION

NOTES

1. FINAL WORDING ON SIGN BOARD TO BE DECIDED AND APPROVED IN CONSULTATION WITH THE EMPLOYER PRIOR TO FABRICATION OF THE SIGN BOARD
2. DIMENSIONS ARE IN MM UNLESS OTHERWISE STATED

**TANA WATER WORKS
DEVELOPMENT AGENCY**

CHIEF EXECUTIVE OFFICER

CHIEF MANGER, TECHNICAL SERVICES

Date.....Sign.....

Date.....Sign.....

PROJECT

TWWDA STANDARD DRAWING -SIGNBOARD

Drawing Title

PERMANENT SIGN BOARD

Designed by: G.M

Drawn by:

Checked by: JM

Approved:

Scale: As Shown

Date:

Drawing No.