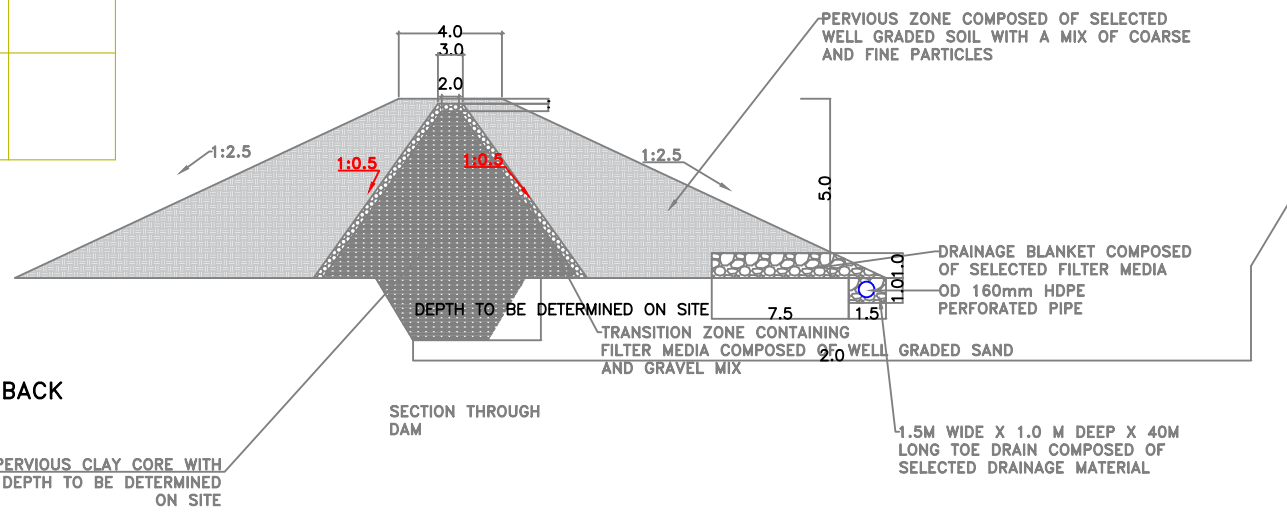
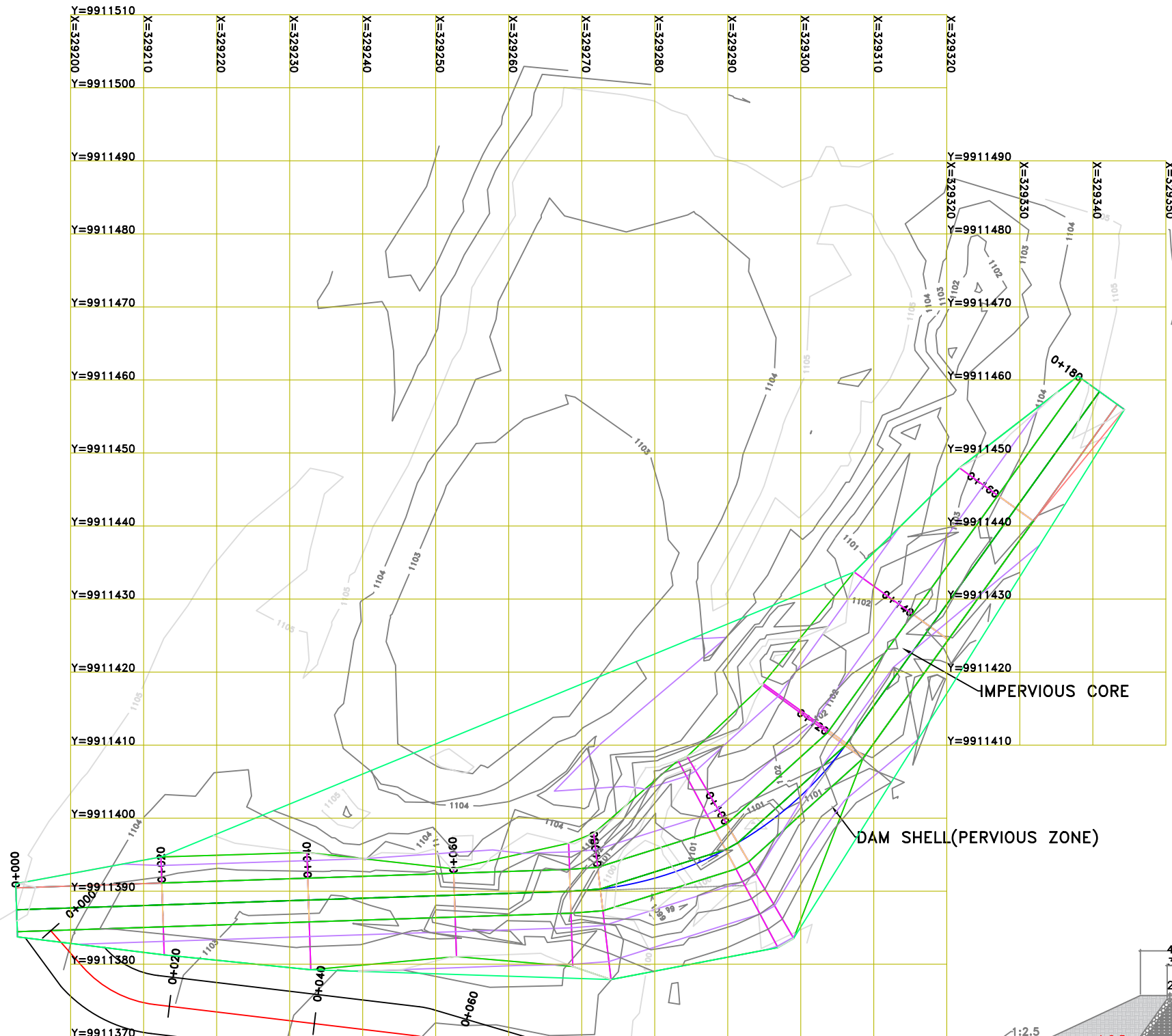


NOTES

1. MATERIAL FOR IMPERVIOUS CLAY CORE SHALL BE OBTAINED FROM APPROVED BORROW AREAS AND PLACED IN ACCORDANCE WITH THE DAM CROSS-SECTION DRAWINGS
2. COMPACTION TO BE DONE IN 300MM LAYERS TO ACHIEVE SPECIFIED DENSITY USING APPROVED COMPACTION EQUIPMENT
3. ALL CONCRETE CLASSES TO BE CLASS $\frac{25}{20}$
4. ALL DIMENSIONS ARE IN METRES UNLESS OTHERWISE STATED



SPILLWAY CHANNEL BACK TO RIVER

IMPERVIOUS CLAY CORE WITH CUTOFF TRENCH DEPTH TO BE DETERMINED ON SITE

CLIENT: **CHIEF EXECUTIVE OFFICER
TANA WATER WORKS
DEVELOPMENT AGENCY**
P.O BOX 1292 - 10100,
NYERI, KENYA

ENGINEER: **CHIEF MANAGER TECHNICAL
SERVICES
TANA WATER WORKS
DEVELOPMENT AGENCY**
P.O BOX 1292 - 10100,
NYERI, KENYA

PROJECT TITLE:
**PRELIMINARY DESIGN OF KWA NGOVU
DAM**

DRAWING TITLE:
DAM EMBANKMENT AND SECTIONS

Designed by: A.M.M	Drawn by: A.M.M
Checked by: J.M.M	Approved by: D.N.M
Scale: 1:100	Date: MARCH 2024
DRG No. KWNG/DAM/01	