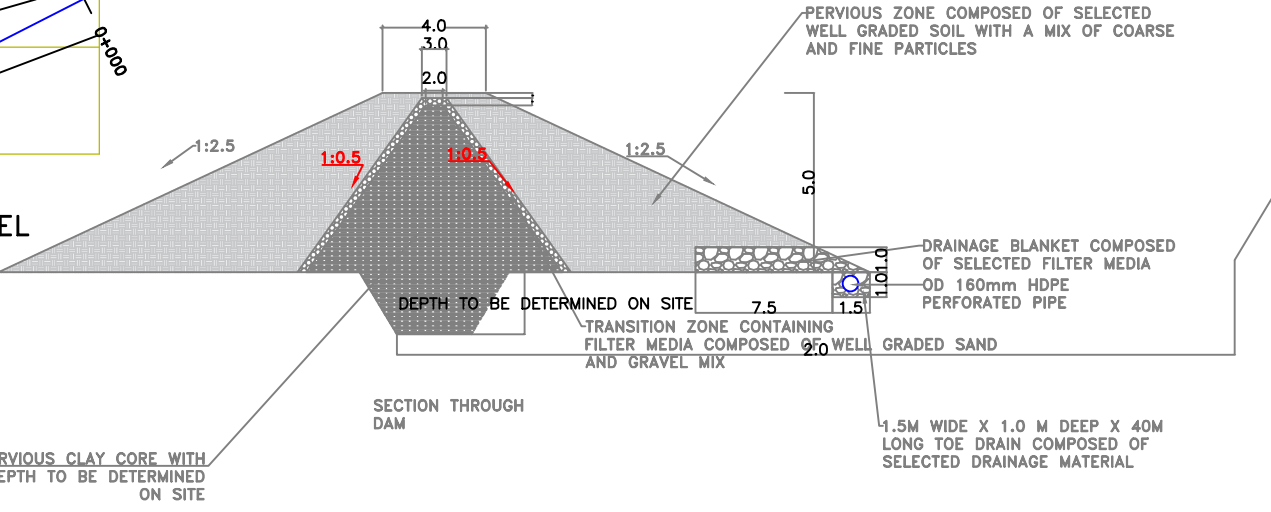
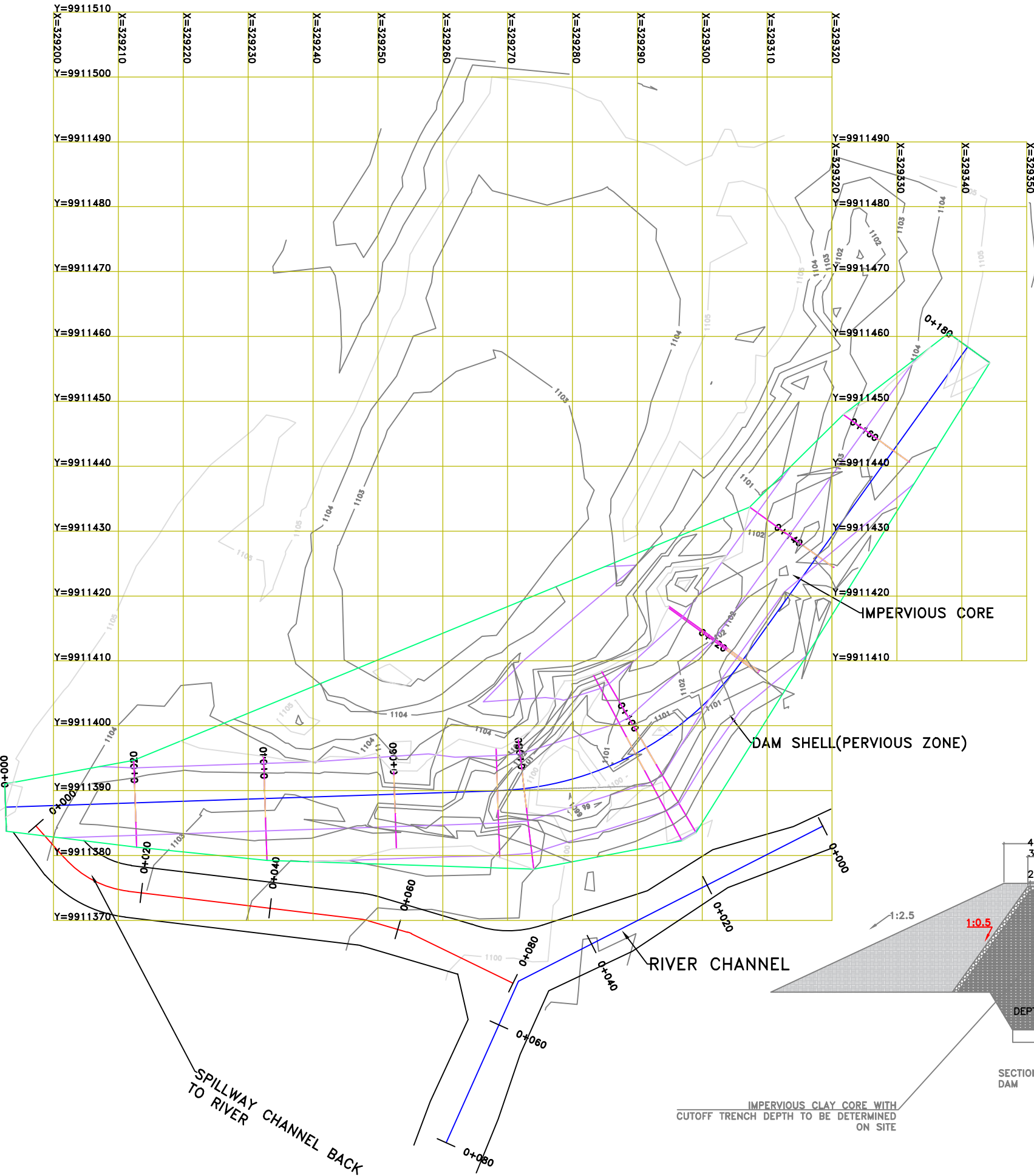


NOTES

1. MATERIAL FOR IMPERVIOUS CLAY CORE SHALL BE OBTAINED FROM APPROVED BORROW AREAS AND PLACED IN ACCORDANCE WITH THE DAM CROSS-SECTION DRAWINGS
2. COMPACTION TO BE DONE IN 300MM LAYERS TO ACHIEVE SPECIFIED DENSITY USING APPROVED COMPACTION EQUIPMENT
3. ALL CONCRETE CLASSES TO BE CLASS 25/20
4. ALL DIMENSIONS ARE IN METRES UNLESS OTHERWISE STATED



CLIENT: CHIEF EXECUTIVE OFFICER
TANA WATER WORKS DEVELOPMENT AGENCY
 P.O BOX 1292 - 10100, NYERI, KENYA

ENGINEER: CHIEF MANAGER TECHNICAL SERVICES
TANA WATER WORKS DEVELOPMENT AGENCY
 P.O BOX 1292 - 10100, NYERI, KENYA

PROJECT TITLE:
PRELIMINARY DESIGN OF KWA NGOVU DAM

DRAWING TITLE:
DAM EMBANKMENT AND SECTIONS

| | |
|----------------------------|--------------------|
| Designed by: A.M.M | Drawn by: A.M.M |
| Checked by: J.M.M | Approved by: D.N.M |
| Scale: 1:100 | Date: MARCH 2024 |
| DRG No. KWNG/DAM/01 | |