


- NOTES**
- ALL LEVELS ARE IN METERS ABOVE SEA LEVEL.
  - COORDINATES ARE BASED ON UTM.
  - LOCATION OF AIR VALVES, WASHOUTS, BENDS AND OTHER FITTINGS AS SHOWN UNLESS OTHERWISE DIRECTED BY THE ENGINEER ON SITE.
  - GROUND AND INVERT LEVEL SHOWN ARE AS SHOWN ON DRAWING UNLESS OTHERWISE INDICATED ON SITE BY THE ENGINEER.
  - PIPES ARE TO BE LAID TO EVEN GRADIENTS WITH A MINIMUM COVER OF 1.0M. WHERE COVER IS LESS THAN THIS, PIPE TO BE SURROUNDED WITH CONCRETE.
  - ALL BENDS ARE HORIZONTAL UNLESS OTHERWISE STATED.
  - IN WATER LOGGED AREAS, PIPES TO BE BEDDED WITH SINGLE SIZED OR GRADED AGGREGATES AS PER CLAUSE 430.1 AND 216 OF TECHNICAL SPECIFICATIONS AND/OR ANCHOR BLOCKS AS MAY BE DIRECTED ON SITE BY THE ENGINEER.

- LEGEND:**
- PROPOSED PIPELINE
  - - - - - EXISTING GROUND PROFILE
  - PIPE INVERT PROFILE
  - EXISTING ROAD
  - ◇ — AIR VALVE
  - DAV — DOUBLE AIR VALVE
  - ▽ — WASHOUT
  - WO1 — WASHOUT TYPE 1
  - WO2 — WASHOUT TYPE 2
  - DN — NOMINAL DIAMETER
  - PN — NOMINAL PRESSURE
  - VB — VERTICAL BEND
  - HB — HORIZONTAL BEND
  - ▨ — EXISTING STRUCTURE
  - ER — EARTH ROAD
  - GR — GRAVEL ROAD
  - CUT

FOR CONSTRUCTION  
signed CMTS

REV	REVISIONS	SIGN	DATE	APPROVED
	BY			
	CHECKED			
	BY			
	CHECKED			
	BY			
	CHECKED			
CO	ISSUED FOR CONSTRUCTION BY			
	CHECKED			

**CLIENT**




TANA WATER WORKS  
DEVELOPMENT AGENCY  
P. O. BOX 1292-10100  
NYERI

**PROJECT**

DESIGNS FOR AUGMENTATION OF  
TIGITHI-HUMUKA WATER PROJECT

**Civil/Structural Engineers**

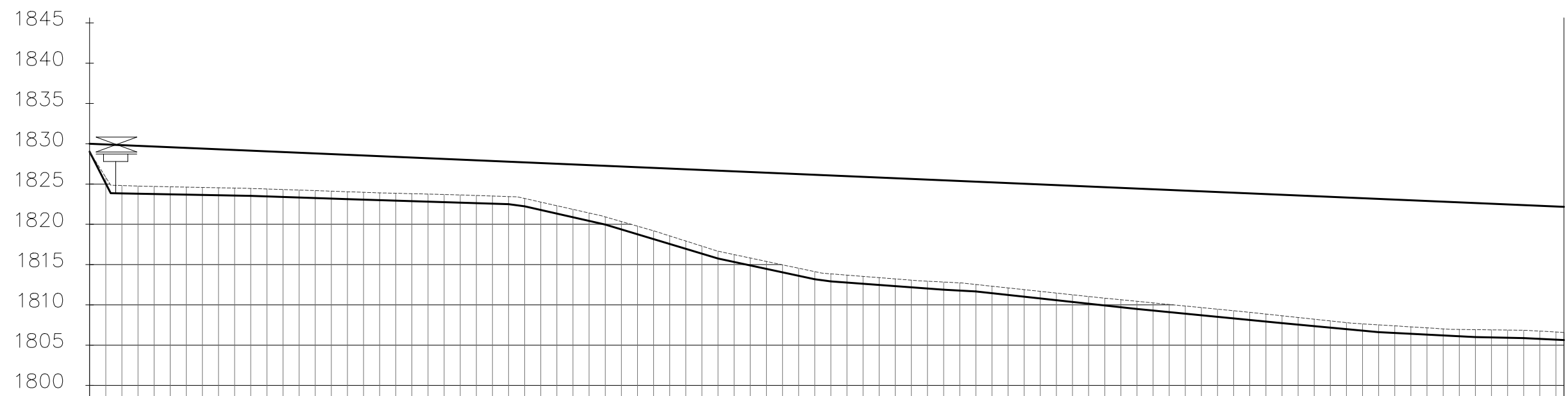


TANA WATER WORKS  
DEVELOPMENT AGENCY  
P. O. BOX 1292-10100  
NYERI

**Drawing Title**

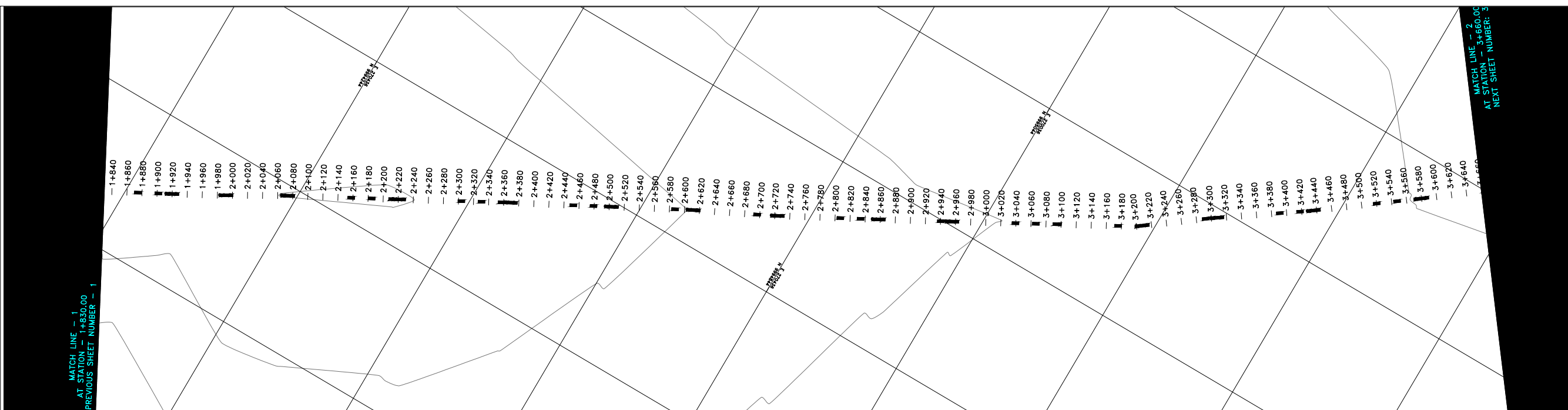
WERUINI TANK SUPPLY  
LINE 2  
PLAN AND PROFILE (SHEET 1 OF 3)

Designed by KNG	Drawn by MK
Checked by JMM	Approved by
Scale AS SHOWN (A1)	Date SEPTEMBER 2023
Job No. 1	ACAD File:
PD STATUS	DRAWING NoTWJWA/THWP/WTS2/01
CO REV	



DISTANCE DATUM (m)	GROUND LEVELS (m)	INVERT LEVELS(m)	DEPTH FROM GROUND LEVEL TO INVERT LEVEL (m)	HGL(m)	TYPE OF PIPE AND SIZE
1830.00	1829.02	1829.02	0+000.00	1830.00	
1829.91	1825.08	1825.84	0+020.00	1829.91	
1829.83	1823.83	1824.81	0+040.00	1829.83	
1829.74	1823.79	1824.75	0+060.00	1829.74	
1829.66	1823.75	1824.70	0+080.00	1829.66	
1829.57	1823.72	1824.66	0+100.00	1829.57	
1829.49	1823.68	1824.62	0+120.00	1829.49	
1829.32	1823.60	1824.54	0+140.00	1829.32	
1829.23	1823.56	1824.50	0+160.00	1829.23	
1829.14	1823.53	1824.45	0+180.00	1829.14	
1829.06	1823.46	1824.38	0+200.00	1829.06	
1828.97	1823.39	1824.32	0+220.00	1828.97	
1828.89	1823.32	1824.25	0+240.00	1828.89	
1828.80	1823.25	1824.18	0+260.00	1828.80	
1828.72	1823.19	1824.11	0+280.00	1828.72	
1828.63	1823.12	1824.04	0+300.00	1828.63	
1828.54	1823.06	1823.97	0+320.00	1828.54	
1828.46	1822.99	1823.90	0+340.00	1828.46	
1828.37	1822.93	1823.85	0+360.00	1828.37	
1828.29	1822.87	1823.80	0+380.00	1828.29	
1828.20	1822.81	1823.75	0+400.00	1828.20	
1828.12	1822.75	1823.70	0+420.00	1828.12	
1828.03	1822.68	1823.65	0+440.00	1828.03	
1827.95	1822.62	1823.58	0+460.00	1827.95	
1827.86	1822.56	1823.51	0+480.00	1827.86	
1827.77	1822.50	1823.44	0+500.00	1827.77	
1827.69	1822.43	1823.37	0+520.00	1827.69	
1827.60	1822.37	1823.31	0+540.00	1827.60	
1827.52	1822.31	1823.25	0+560.00	1827.52	
1827.43	1822.25	1823.19	0+580.00	1827.43	
1827.35	1822.19	1823.13	0+600.00	1827.35	
1827.26	1822.13	1823.07	0+620.00	1827.26	
1827.18	1822.07	1823.01	0+640.00	1827.18	
1827.09	1822.01	1822.95	0+660.00	1827.09	
1827.00	1821.95	1822.89	0+680.00	1827.00	
1826.92	1821.89	1822.83	0+700.00	1826.92	
1826.83	1821.83	1822.77	0+720.00	1826.83	
1826.75	1821.77	1822.71	0+740.00	1826.75	
1826.66	1821.71	1822.65	0+760.00	1826.66	
1826.58	1821.65	1822.59	0+780.00	1826.58	
1826.49	1821.59	1822.53	0+800.00	1826.49	
1826.40	1821.53	1822.47	0+820.00	1826.40	
1826.32	1821.47	1822.41	0+840.00	1826.32	
1826.23	1821.41	1822.35	0+860.00	1826.23	
1826.15	1821.35	1822.29	0+880.00	1826.15	
1826.06	1821.29	1822.23	0+900.00	1826.06	
1825.98	1821.23	1822.17	0+920.00	1825.98	
1825.89	1821.17	1822.11	0+940.00	1825.89	
1825.81	1821.11	1822.05	0+960.00	1825.81	
1825.72	1821.05	1821.99	0+980.00	1825.72	
1825.63	1820.99	1821.93	1+000.00	1825.63	
1825.55	1820.93	1821.87	1+020.00	1825.55	
1825.46	1820.87	1821.81	1+040.00	1825.46	
1825.38	1820.81	1821.75	1+060.00	1825.38	
1825.29	1820.75	1821.69	1+080.00	1825.29	
1825.21	1820.69	1821.63	1+100.00	1825.21	
1825.12	1820.63	1821.57	1+120.00	1825.12	
1825.03	1820.57	1821.51	1+140.00	1825.03	
1824.95	1820.51	1821.45	1+160.00	1824.95	
1824.86	1820.45	1821.39	1+180.00	1824.86	
1824.78	1820.39	1821.33	1+200.00	1824.78	
1824.69	1820.33	1821.27	1+220.00	1824.69	
1824.61	1820.27	1821.21	1+240.00	1824.61	
1824.52	1820.21	1821.15	1+260.00	1824.52	
1824.44	1820.15	1821.09	1+280.00	1824.44	
1824.35	1820.09	1821.03	1+300.00	1824.35	
1824.26	1820.03	1820.97	1+320.00	1824.26	
1824.18	1819.97	1820.91	1+340.00	1824.18	
1824.09	1819.91	1820.85	1+360.00	1824.09	
1824.01	1819.85	1820.79	1+380.00	1824.01	
1823.92	1819.79	1820.73	1+400.00	1823.92	
1823.84	1819.73	1820.67	1+420.00	1823.84	
1823.75	1819.67	1820.61	1+440.00	1823.75	
1823.67	1819.61	1820.55	1+460.00	1823.67	
1823.58	1819.55	1820.49	1+480.00	1823.58	
1823.49	1819.49	1820.43	1+500.00	1823.49	
1823.41	1819.43	1820.37	1+520.00	1823.41	
1823.32	1819.37	1820.31	1+540.00	1823.32	
1823.24	1819.31	1820.25	1+560.00	1823.24	
1823.15	1819.25	1820.19	1+580.00	1823.15	
1823.07	1819.19	1820.13	1+600.00	1823.07	
1822.98	1819.13	1820.07	1+620.00	1822.98	
1822.89	1819.07	1820.01	1+640.00	1822.89	
1822.81	1819.01	1819.95	1+660.00	1822.81	
1822.72	1818.95	1819.89	1+680.00	1822.72	
1822.64	1818.89	1819.83	1+700.00	1822.64	
1822.55	1818.83	1819.77	1+720.00	1822.55	
1822.47	1818.77	1819.71	1+740.00	1822.47	
1822.38	1818.71	1819.65	1+760.00	1822.38	
1822.30	1818.65	1819.59	1+780.00	1822.30	
1822.21	1818.59	1819.53	1+800.00	1822.21	
1822.17	1818.53	1819.47	1+820.00	1822.17	

WERUINI SUPPLY LINE 2  
SCALE: HOR 1:2000 VERT 1:1000




- NOTES**
- ALL LEVELS ARE IN METERS ABOVE SEA LEVEL.
  - COORDINATES ARE BASED ON UTM.
  - LOCATION OF AIR VALVES, WASHOUTS, BENDS AND OTHER FITTINGS AS SHOWN UNLESS OTHERWISE DIRECTED BY THE ENGINEER ON SITE.
  - GROUND AND INVERT LEVEL SHOWN ARE AS SHOWN ON DRAWING UNLESS OTHERWISE INDICATED ON SITE BY THE ENGINEER.
  - PIPES ARE TO BE LAID TO EVEN GRADIENTS WITH A MINIMUM COVER OF 1.0M. WHERE COVER IS LESS THAN THIS, PIPE TO BE SURROUNDED WITH CONCRETE.
  - ALL BENDS ARE HORIZONTAL UNLESS OTHERWISE STATED.
  - IN WATER LOGGED AREAS, PIPES TO BE BEDDED WITH SINGLE SIZED OR GRADED AGGREGATES AS PER CLAUSE 430.1 AND 216 OF TECHNICAL SPECIFICATIONS AND/OR ANCHOR BLOCKS AS MAY BE DIRECTED ON SITE BY THE ENGINEER.

- LEGEND:**
- PROPOSED PIPELINE
  - EXISTING GROUND PROFILE
  - PIPE INVERT PROFILE
  - EXISTING ROAD
  - AIR VALVE
  - DOUBLE AIR VALVE
  - WASHOUT
  - WASHOUT TYPE 1
  - WASHOUT TYPE 2
  - NOMINAL DIAMETER
  - NOMINAL PRESSURE
  - VERTICAL BEND
  - HORIZONTAL BEND
  - EXISTING STRUCTURE
  - EARTH ROAD
  - GRAVEL ROAD
  - CUT

**FOR CONSTRUCTION**  
signed CMTS

REV	REVISIONS	SIGN	DATE	APPROVED
	BY CHECKED			
	BY CHECKED			
	BY CHECKED			
CO	ISSUED FOR CONSTRUCTION BY CHECKED			

**CLIENT**




TANA WATER WORKS  
DEVELOPMENT AGENCY  
P. O. BOX 1292-10100  
NYERI

**PROJECT**

DESIGNS FOR AUGMENTATION OF  
TIGITHI-HUMUKA WATER PROJECT

Civil/Structural Engineers



TANA WATER WORKS  
DEVELOPMENT AGENCY  
P. O. BOX 1292-10100  
NYERI

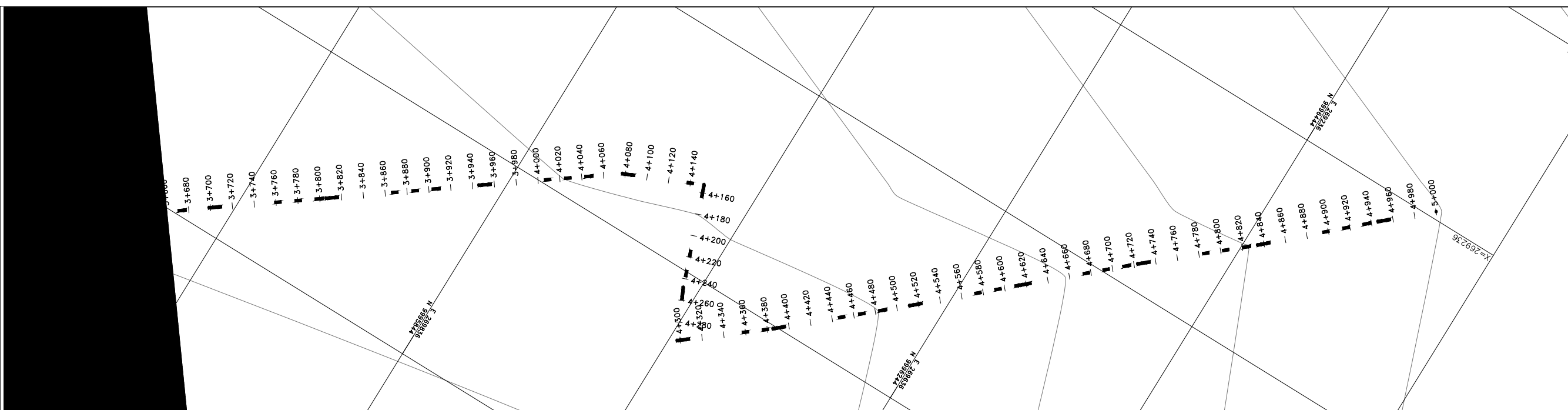
Drawing Title  
WERUINI TANK SUPPLY  
LINE 2  
PLAN AND PROFILE (SHEET 2 OF 3)

Designed by KNG	Drawn by MK
Checked by JMM	Approved by
Scale AS SHOWN (A1)	Date SEPTEMBER 2023
Job No. 1	ACAD File:
PD STATUS	DRAWING NoTWJDA/THWP/WTS2/02/CO
	REV



DISTANCE DATUM (m)	GROUND LEVELS (m)	INVERT LEVELS(m)	DEPTH FROM GROUND LEVEL TO INVERT LEVEL (m)	HGL(m)	TYPE OF PIPE AND SIZE
1822.17	1805.64	1806.68	0.94	1805.64	PN10 00 114.5MM PVC PIPE
1822.12	1805.59	1806.52	0.93	1805.59	PN10 00 114.5MM PVC PIPE
1822.04	1805.49	1806.41	0.92	1805.49	PN10 00 114.5MM PVC PIPE
1821.95	1805.40	1806.30	0.90	1805.40	PN10 00 114.5MM PVC PIPE
1821.87	1805.31	1806.19	0.88	1805.31	PN10 00 114.5MM PVC PIPE
1821.78	1805.21	1806.15	0.94	1805.21	PN10 00 114.5MM PVC PIPE
1821.70	1805.24	1806.19	0.94	1805.24	PN10 00 114.5MM PVC PIPE
1821.61	1805.26	1806.24	0.98	1805.26	PN10 00 114.5MM PVC PIPE
1821.53	1805.29	1806.28	1.00	1805.29	PN10 00 114.5MM PVC PIPE
1821.44	1805.31	1806.23	0.92	1805.31	PN10 00 114.5MM PVC PIPE
1821.35	1805.26	1806.15	0.89	1805.26	PN10 00 114.5MM PVC PIPE
1821.27	1805.21	1806.08	0.87	1805.21	PN10 00 114.5MM PVC PIPE
1821.18	1805.16	1806.01	0.85	1805.16	PN10 00 114.5MM PVC PIPE
1821.10	1805.10	1805.98	0.87	1805.10	PN10 00 114.5MM PVC PIPE
1821.01	1805.05	1805.97	0.92	1805.05	PN10 00 114.5MM PVC PIPE
1820.93	1805.00	1805.96	0.96	1805.00	PN10 00 114.5MM PVC PIPE
1820.84	1804.99	1805.85	0.95	1804.99	PN10 00 114.5MM PVC PIPE
1820.75	1804.98	1805.84	0.95	1804.98	PN10 00 114.5MM PVC PIPE
1820.67	1804.98	1805.83	0.94	1804.98	PN10 00 114.5MM PVC PIPE
1820.58	1804.97	1805.91	0.94	1804.97	PN10 00 114.5MM PVC PIPE
1820.50	1804.97	1805.83	0.96	1804.97	PN10 00 114.5MM PVC PIPE
1820.41	1805.05	1806.00	0.95	1805.05	PN10 00 114.5MM PVC PIPE
1820.33	1805.12	1806.06	0.93	1805.12	PN10 00 114.5MM PVC PIPE
1820.24	1805.20	1806.12	0.92	1805.20	PN10 00 114.5MM PVC PIPE
1820.16	1805.28	1806.19	0.91	1805.28	PN10 00 114.5MM PVC PIPE
1820.07	1805.36	1806.25	0.89	1805.36	PN10 00 114.5MM PVC PIPE
1819.98	1805.44	1806.32	0.88	1805.44	PN10 00 114.5MM PVC PIPE
1819.90	1805.51	1806.38	0.86	1805.51	PN10 00 114.5MM PVC PIPE
1819.81	1805.59	1806.50	0.81	1805.59	PN10 00 114.5MM PVC PIPE
1819.73	1805.72	1806.62	0.91	1805.72	PN10 00 114.5MM PVC PIPE
1819.64	1805.84	1806.75	0.91	1805.84	PN10 00 114.5MM PVC PIPE
1819.56	1805.96	1806.87	0.91	1805.96	PN10 00 114.5MM PVC PIPE
1819.47	1806.09	1806.99	0.91	1806.09	PN10 00 114.5MM PVC PIPE
1819.39	1806.21	1807.12	0.91	1806.21	PN10 00 114.5MM PVC PIPE
1819.30	1806.34	1807.25	0.91	1806.34	PN10 00 114.5MM PVC PIPE
1819.21	1806.46	1807.39	0.93	1806.46	PN10 00 114.5MM PVC PIPE
1819.13	1806.58	1807.54	0.96	1806.58	PN10 00 114.5MM PVC PIPE
1819.04	1806.70	1807.68	0.98	1806.70	PN10 00 114.5MM PVC PIPE
1818.96	1806.83	1807.83	1.00	1806.83	PN10 00 114.5MM PVC PIPE
1818.87	1806.95	1807.97	1.02	1806.95	PN10 00 114.5MM PVC PIPE
1818.79	1807.07	1808.09	1.01	1807.07	PN10 00 114.5MM PVC PIPE
1818.70	1807.20	1808.20	1.00	1807.20	PN10 00 114.5MM PVC PIPE
1818.61	1807.32	1808.31	0.99	1807.32	PN10 00 114.5MM PVC PIPE
1818.53	1807.44	1808.43	0.98	1807.44	PN10 00 114.5MM PVC PIPE
1818.44	1807.57	1808.54	0.97	1807.57	PN10 00 114.5MM PVC PIPE
1818.36	1807.69	1808.65	0.96	1807.69	PN10 00 114.5MM PVC PIPE
1818.27	1807.81	1808.76	0.95	1807.81	PN10 00 114.5MM PVC PIPE
1818.19	1807.94	1808.87	0.93	1807.94	PN10 00 114.5MM PVC PIPE
1818.10	1808.06	1808.98	0.92	1808.06	PN10 00 114.5MM PVC PIPE
1818.02	1808.15	1809.09	0.94	1808.15	PN10 00 114.5MM PVC PIPE
1817.93	1808.24	1809.20	0.96	1808.24	PN10 00 114.5MM PVC PIPE
1817.84	1808.32	1809.31	0.99	1808.32	PN10 00 114.5MM PVC PIPE
1817.76	1808.41	1809.41	1.00	1808.41	PN10 00 114.5MM PVC PIPE
1817.67	1808.50	1809.50	1.00	1808.50	PN10 00 114.5MM PVC PIPE
1817.59	1808.59	1809.59	1.00	1808.59	PN10 00 114.5MM PVC PIPE
1817.50	1808.68	1809.68	1.00	1808.68	PN10 00 114.5MM PVC PIPE
1817.42	1808.77	1809.77	1.00	1808.77	PN10 00 114.5MM PVC PIPE
1817.33	1808.86	1809.84	0.98	1808.86	PN10 00 114.5MM PVC PIPE
1817.24	1808.94	1809.90	0.96	1808.94	PN10 00 114.5MM PVC PIPE
1817.16	1809.03	1809.96	0.93	1809.03	PN10 00 114.5MM PVC PIPE
1817.07	1809.10	1810.02	0.92	1809.10	PN10 00 114.5MM PVC PIPE
1816.99	1809.16	1810.08	0.92	1809.16	PN10 00 114.5MM PVC PIPE
1816.90	1809.23	1810.14	0.92	1809.23	PN10 00 114.5MM PVC PIPE
1816.82	1809.29	1810.21	0.92	1809.29	PN10 00 114.5MM PVC PIPE
1816.73	1809.35	1810.27	0.91	1809.35	PN10 00 114.5MM PVC PIPE
1816.65	1809.42	1810.33	0.91	1809.42	PN10 00 114.5MM PVC PIPE
1816.56	1809.48	1810.39	0.91	1809.48	PN10 00 114.5MM PVC PIPE
1816.47	1809.55	1810.45	0.90	1809.55	PN10 00 114.5MM PVC PIPE
1816.39	1809.61	1810.51	0.90	1809.61	PN10 00 114.5MM PVC PIPE
1816.30	1809.65	1810.57	0.92	1809.65	PN10 00 114.5MM PVC PIPE
1816.22	1809.69	1810.61	0.92	1809.69	PN10 00 114.5MM PVC PIPE
1816.13	1809.73	1810.64	0.91	1809.73	PN10 00 114.5MM PVC PIPE
1816.05	1809.77	1810.68	0.90	1809.77	PN10 00 114.5MM PVC PIPE
1815.96	1809.81	1810.71	0.90	1809.81	PN10 00 114.5MM PVC PIPE
1815.88	1809.85	1810.74	0.89	1809.85	PN10 00 114.5MM PVC PIPE
1815.79	1809.78	1810.67	0.89	1809.78	PN10 00 114.5MM PVC PIPE
1815.70	1809.72	1810.60	0.88	1809.72	PN10 00 114.5MM PVC PIPE
1815.62	1809.65	1810.53	0.88	1809.65	PN10 00 114.5MM PVC PIPE
1815.53	1809.58	1810.46	0.88	1809.58	PN10 00 114.5MM PVC PIPE
1815.45	1809.52	1810.39	0.88	1809.52	PN10 00 114.5MM PVC PIPE
1815.36	1809.45	1810.32	0.87	1809.45	PN10 00 114.5MM PVC PIPE
1815.28	1809.38	1810.27	0.89	1809.38	PN10 00 114.5MM PVC PIPE
1815.19	1809.31	1810.23	0.91	1809.31	PN10 00 114.5MM PVC PIPE
1815.10	1809.27	1810.18	0.91	1809.27	PN10 00 114.5MM PVC PIPE
1815.02	1809.22	1810.14	0.92	1809.22	PN10 00 114.5MM PVC PIPE
1814.93	1809.18	1810.10	0.92	1809.18	PN10 00 114.5MM PVC PIPE
1814.85	1809.13	1810.05	0.92	1809.13	PN10 00 114.5MM PVC PIPE
1814.76	1809.09	1810.01	0.92	1809.09	PN10 00 114.5MM PVC PIPE
1814.68	1809.04	1809.97	0.92	1809.04	PN10 00 114.5MM PVC PIPE
1814.59	1809.00	1809.92	0.92	1809.00	PN10 00 114.5MM PVC PIPE
1814.51	1808.95	1809.88	0.93	1808.95	PN10 00 114.5MM PVC PIPE
1814.42	1808.90	1809.84	0.93	1808.90	PN10 00 114.5MM PVC PIPE
1814.33	1808.85	1809.79	0.94	1808.85	PN10 00 114.5MM PVC PIPE

WERUINI SUPPLY LINE 2  
SCALE: HOR 1:2000 VERT 1:1000



**NOTES**

1. ALL LEVELS ARE IN METERS ABOVE SEA LEVEL.
2. COORDINATES ARE BASED ON UTM.
3. LOCATION OF AIR VALVES, WASHOUTS, BENDS AND OTHER FITTINGS AS SHOWN UNLESS OTHERWISE DIRECTED BY THE ENGINEER ON SITE.
4. GROUND AND INVERT LEVEL SHOWN ARE AS SHOWN ON DRAWING UNLESS OTHERWISE INDICATED ON SITE BY THE ENGINEER.
5. PIPES ARE TO BE LAID TO EVEN GRADIENTS WITH A MINIMUM COVER OF 1.0M. WHERE COVER IS LESS THAN THIS, PIPE TO BE SURROUNDED WITH CONCRETE.
6. ALL BENDS ARE HORIZONTAL UNLESS OTHERWISE STATED.
7. IN WATER LOGGED AREAS, PIPES TO BE BEDDED WITH SINGLE SIZED OR GRADED AGGREGATES AS PER CLAUSE 430.1 AND 216 OF TECHNICAL SPECIFICATIONS AND/OR ANCHOR BLOCKS AS MAY BE DIRECTED ON SITE BY THE ENGINEER.

- LEGEND:**
- PROPOSED PIPELINE
  - - - - - EXISTING GROUND PROFILE
  - PIPE INVERT PROFILE
  - - - - - EXISTING ROAD

- AIR VALVE
- DOUBLE AIR VALVE
- WASHOUT
- WO1 - WASHOUT TYPE 1
- WO2 - WASHOUT TYPE 2
- DN - NOMINAL DIAMETER
- PN - NOMINAL PRESSURE
- VB - VERTICAL BEND
- HB - HORIZONTAL BEND
- EXISTING STRUCTURE
- ER - EARTH ROAD
- GR - GRAVEL ROAD
- CUT

FOR CONSTRUCTION  
signed CMTS

REV	REVISIONS	SIGN	DATE	APPROVED
	BY			
	CHECKED			
	BY			
	CHECKED			
	BY			
	CHECKED			
CO	ISSUED FOR CONSTRUCTION BY			
	CHECKED			

CLIENT

TANA WATER WORKS DEVELOPMENT AGENCY  
P. O. BOX 1292-10100 NYERI

PROJECT

DESIGNS FOR AUGMENTATION OF TIGITHI-HUMUKA WATER PROJECT

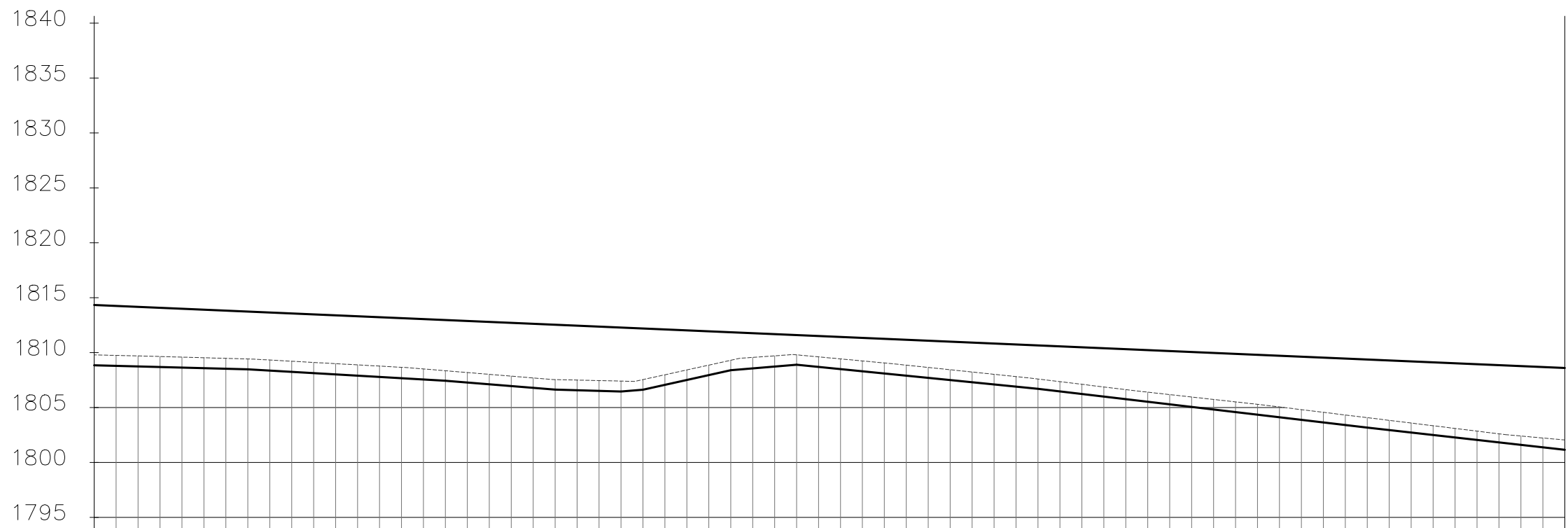
Civil/Structural Engineers

TANA WATER WORKS DEVELOPMENT AGENCY  
P. O. BOX 1292-10100 NYERI

Drawing Title

WERUINI TANK SUPPLY  
LINE 2  
PLAN AND PROFILE (SHEET 3 OF 3)

Designed by KNG	Drawn by MK
Checked by JMM	Approved by
Scale AS SHOWN (A1)	Date SEPTEMBER 2023
Job No. 1	ACAD File:
PD STATUS	DRAWING NoTWDA/THWP/WTS2/03
	CO REV



DISTANCE DATUM (m)	GROUND LEVELS (m)	INVERT LEVELS(m)	DEPTH FROM GROUND LEVEL TO INVERT LEVEL (m)	HGL(m)	TYPE OF PIPE AND SIZE
1814.33	1808.85	1809.79	3+660.00	1814.33	PN10 00 63MM HDPE PIPE
1814.25	1808.80	1809.75	3+680.00	1814.25	
1814.16	1808.75	1809.70	3+700.00	1814.16	
1814.08	1808.69	1809.65	3+720.00	1814.08	
1813.99	1808.64	1809.59	3+740.00	1813.99	
1813.91	1808.59	1809.54	3+760.00	1813.91	
1813.82	1808.54	1809.48	3+780.00	1813.82	
1813.74	1808.48	1809.42	3+800.00	1813.74	
1813.65	1808.37	1809.33	3+820.00	1813.65	
1813.56	1808.25	1809.22	3+840.00	1813.56	
1813.48	1808.14	1809.11	3+860.00	1813.48	
1813.39	1808.02	1809.00	3+880.00	1813.39	
1813.31	1807.91	1808.89	3+900.00	1813.31	
1813.22	1807.79	1808.77	3+920.00	1813.22	
1813.14	1807.67	1808.66	3+940.00	1813.14	
1813.05	1807.56	1808.52	3+960.00	1813.05	
1812.96	1807.44	1808.35	3+980.00	1812.96	
1812.88	1807.28	1808.19	4+000.00	1812.88	
1812.79	1807.12	1808.02	4+020.00	1812.79	
1812.71	1806.96	1807.86	4+040.00	1812.71	
1812.62	1806.80	1807.69	4+060.00	1812.62	
1812.54	1806.64	1807.55	4+080.00	1812.54	
1812.45	1806.58	1807.50	4+100.00	1812.45	
1812.37	1806.52	1807.46	4+120.00	1812.37	
1812.28	1806.46	1807.41	4+140.00	1812.28	
1812.19	1806.22	1807.54	4+160.00	1812.19	
1812.11	1807.07	1807.98	4+180.00	1812.11	
1812.02	1807.51	1808.42	4+200.00	1812.02	
1811.94	1807.95	1808.86	4+220.00	1811.94	
1811.85	1808.40	1809.30	4+240.00	1811.85	
1811.77	1808.56	1809.57	4+260.00	1811.77	
1811.68	1808.73	1809.71	4+280.00	1811.68	
1811.59	1808.90	1809.80	4+300.00	1811.59	
1811.51	1808.70	1809.61	4+320.00	1811.51	
1811.42	1808.50	1809.43	4+340.00	1811.42	
1811.34	1808.30	1809.24	4+360.00	1811.34	
1811.25	1808.10	1809.06	4+380.00	1811.25	
1811.17	1807.90	1808.86	4+400.00	1811.17	
1811.08	1807.70	1808.65	4+420.00	1811.08	
1811.00	1807.50	1808.44	4+440.00	1811.00	
1810.91	1807.30	1808.23	4+460.00	1810.91	
1810.82	1807.11	1808.03	4+480.00	1810.82	
1810.74	1806.91	1807.82	4+500.00	1810.74	
1810.65	1806.71	1807.60	4+520.00	1810.65	
1810.57	1806.47	1807.36	4+540.00	1810.57	
1810.48	1806.24	1807.12	4+560.00	1810.48	
1810.40	1806.00	1806.87	4+580.00	1810.40	
1810.31	1805.76	1806.63	4+600.00	1810.31	
1810.23	1805.53	1806.40	4+620.00	1810.23	
1810.14	1805.29	1806.18	4+640.00	1810.14	
1810.05	1805.06	1805.96	4+660.00	1810.05	
1809.97	1804.82	1805.74	4+680.00	1809.97	
1809.88	1804.59	1805.51	4+700.00	1809.88	
1809.80	1804.35	1805.29	4+720.00	1809.80	
1809.71	1804.12	1805.05	4+740.00	1809.71	
1809.63	1803.88	1804.81	4+760.00	1809.63	
1809.54	1803.64	1804.57	4+780.00	1809.54	
1809.45	1803.41	1804.32	4+800.00	1809.45	
1809.37	1803.17	1804.08	4+820.00	1809.37	
1809.28	1802.95	1803.83	4+840.00	1809.28	
1809.20	1802.72	1803.59	4+860.00	1809.20	
1809.11	1802.50	1803.34	4+880.00	1809.11	
1809.03	1802.27	1803.10	4+900.00	1809.03	
1808.94	1802.05	1802.85	4+920.00	1808.94	
1808.86	1801.82	1802.61	4+940.00	1808.86	
1808.77	1801.60	1802.41	4+960.00	1808.77	
1808.68	1801.37	1802.23	4+980.00	1808.68	
1808.60	1801.15	1802.05	4+999.99	1808.60	

WERUINI SUPPLY LINE 2  
SCALE: HOR 1:2000 VERT 1:1000